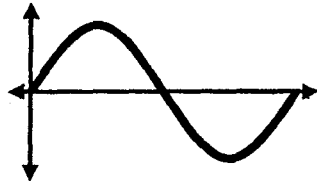


Name: \_\_\_\_\_

Teacher: \_\_\_\_\_ Per: \_\_\_\_\_

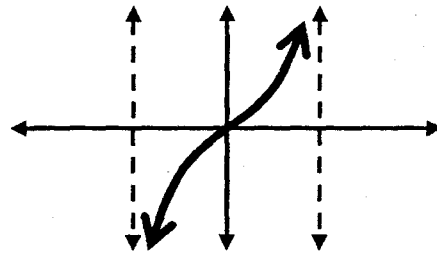
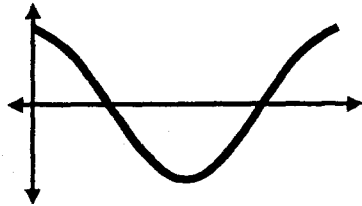


$$y = \sin x$$

# Trigonometry

## Supplementary Materials

$$y = \cos x$$



$$y = \tan x$$

**MATH 20**  
**Supplementary Materials**  
Table of Contents

1. Geometry Review.....	1
2. Trigonometry Review.....	14
3. Base Graphs and Translations.....	16
4. Functions.....	18
5. Quadratic Functions and their Applications.....	25
6. Factoring.....	27
7. Rational Expressions.....	30
8. Complex Fractions and Exponents.....	32
9. Difference Quotient.....	36
10. Polynomial Graphs.....	37
11. Basic Identify Handout.....	42
12. Radicals.....	43
13. Absolute Value Inequalities.....	50
14. Polynomial Inequalities.....	51
15. Rational Inequalities.....	54
16. Systems of Equations using Elimination and Substitution.....	57
17. Solving Systems using the Gauss-Jordan Method.....	63
18. Applications of Systems of Equations.....	68
19. Graphs of Rational Functions.....	70
20. Systems of Non-linear Graphs.....	76
Answers.....	79-98