

COVID-19 Safety Plan

Elk Grove Unified School District Safe Return to In-Person Instruction and Continuity of Services Plan

Revised January 21, 2022

Elk Grove Unified School District

Student Support & Health Services

www.egusd.net/sshs

Phone: (916) 686-7568 | Fax: (916) 689-7596

Table of Contents

| | |
|-------------------------------------------------------------------------------------------------------|----------|
| MESSAGE FROM THE SUPERINTENDENT | 3 |
| • Back to School Message | |
| MAINTENANCE OF HEALTH AND SAFETY OF STUDENTS, EDUCATORS, AND OTHER STAFF..... | 4 |
| • Efforts to Provide Vaccinations to School Communities..... | 4 |
| • Universal and Correct Wearing of Masks, Face Coverings and Other Essential Protective Gear | 4 |
| • Upgrade Your Mask..... | 6 |
| • Face Shield Frequently Asked Questions | 7 |
| • Modifying Facilities to Allow for Physical Distancing (e.g., use of cohorts/ podding) | 9 |
| • Recess | 9 |
| • Meals | 9 |
| • School Buses..... | 9 |
| • Healthy Hygiene Practices, Handwashing and Respiratory Etiquette..... | 10 |
| • Continuity of Services..... | 10 |
| • Health Screening for Students and Staff | 11 |
| • Identification and Tracing of Contacts | 20 |
| • Quarantine and Modified Quarantine..... | 20 |
| • Staff Training and Family Education | 22 |
| • Identification and Reporting of Cases | 22 |
| • Close Contact Notification | 23 |
| • Communication Plans..... | 24 |
| • Public Feedback and Opportunity for Comment and Incorporation in Development of Plan..... | 25 |
| Appendix 1: Sample Notifications | 26 |

Message from the Superintendent

Dear Students, Families and Staff,

Provided for you in this document is the Elk Grove Unified School District's "Safe Return to In-Person Instruction and Continuity of Services Plan." This plan is a revision from our EGUSD COVID-19 Safety Plan and outlines our District's implementation, to the greatest extent practicable, updated prevention and mitigation policies in line with the most up-to-date guidance from the Centers for Disease Control and Prevention ("CDC") and the California Department of Public Health (CDPH) K-12 Guidance for 2021-2022 in collaboration with our local Sacramento County Public Health (SCPH) Officers for the reopening and operation of school facilities to effectively maintain the health and safety of students, educators, and other staff.

Knowing that COVID-19 continues to circulate in our local community, including its variants, and in recognition that in-person learning is essential for the well-being of our students, the mitigation strategies our District will be implementing will enable us to provide high quality in-person educational services and supports for every child in our District.

In line with our Wellness Policy of Healthy Bodies, Healthy Minds and Healthy Learning, we will continue to promote COVID-19 vaccination clinics, follow state public health requirements, solicit community feedback and comment on our safety plans and subsequent revisions, and provide continuity of services for the academic, social, behavioral, and emotional support our students need including transportation and food and nutrition services.

Christopher R. Hoffman
Superintendent

MAINTENANCE OF HEALTH AND SAFETY

Efforts to Provide Vaccinations to School Communities

February 2021 – March 2021

EGUSD collaborated with local health officials, community organizations and local health care providers to provide COVID-19 vaccination information and clinic opportunities to all EGUSD staff.

March 2021 – ongoing

EGUSD continues to collaborate with local health officials, community organizations and local health care providers to provide COVID-19 vaccination information and clinic opportunities to all EGUSD eligible students, families and community members at identified school location.

EGUSD maintains a COVID-19 Vaccination Clinic information webpage on the District's website.

EGUSD created a public awareness campaign on social media and through public relations to promote the importance and availability of getting vaccinated against COVID-19 and continues to partner with local agencies to further promote vaccinations and help decrease vaccine hesitancy.

EGUSD sends weekly Community Updates to all District staff, students and families to further promote and inform the public about area COVID-19 vaccination clinics and the importance of getting vaccinated to stop the spread of COVID-19.

Universal and Correct Wearing of Masks, Face Coverings and Other Essential Protective Gear

Face coverings will be used in accordance with California Department of Public Health (CDPH) guidelines.

Masks are strongly recommended outdoors in TK-12 school settings, but not required. Masks are recommended for unvaccinated employees outside.

TK-12 students are required to mask indoors, with exemptions per CDPH face mask guidance. Adults in TK-12 school settings are required to mask when sharing indoor spaces with students.

Students and staff must have a medical waiver signed by their primary care physician to be exempted from wearing a face covering. Previous masking exemptions per CDPH face mask guidance will still be honored.

Students and staff are exempted from the requirement if:

- They are under age 2 years old
- Have a medical or mental health condition or disability that would impede them from properly wearing or handling a face covering (waiver required).
- Persons exempted from wearing a face covering due to a medical condition, as confirmed by school district health team and therapists, must wear a non-restrictive alternative, such as a face shield with a drape on the bottom edge, as long as their condition permits it.
- Those with a communication disability, or when it would inhibit communication with a person who is hearing impaired. Those with communication disabilities or caregivers of those with communication disabilities can consider wearing a face shield with a drape, clear mask or cloth mask with a clear panel when appropriate.

Education limited situations where a face covering cannot be used for pedagogical or developmental reasons, (e.g., communicating or assisting young children or those with special needs) a face shield with a drape can be used instead of a face covering while in the classroom as long as the wearer maintains physical distance from others. Staff must return to wearing a face covering outside of the classroom. For answers to Frequently Asked Questions go to this link:

https://www.cdph.ca.gov/Programs/CID/DCDC/CDPH%20Document%20Library/C/COVID-19/faceshield_handout.pdf

Face coverings should follow district dress code standards.

Education to all students and staff on how to properly wear, dispose, and clean face coverings, masks, and shields.

All visitors, including families, must wear face coverings when indoors on campus.

Students and staff will be monitored throughout the day to ensure they are properly wearing a face covering.

Removing of face coverings or face shields with a drape, will only occur while outdoors, during meals, snacks, naptime, or when it needs to be replaced. When a face covering is temporarily removed, it should be placed in a clean, safe area, designated for the specific student or staff, until it needs to be put on again.

Each school will continue to follow its Multi-Tiered Systems of Support and Positive Behavior Interventions and Supports to maintain safe school environments. Per the CDPH mask guidance, students who do not qualify for a face covering exemption, or who are not willing to wear a face covering, may attend either the [EGUSD Virtual Academy](#) or Las Flores Independent Study Programs.

Upgrade Your Mask

Consider Fit, Filtration and Comfort

GOOD



**Surgical
Mask**

BETTER



**KF94/KN95
Surgical + Cloth**

BEST



N95

FAIR



Cloth Mask

One that fits well and has at least 3 layers. A cloth mask is better than no mask.



Resource: <https://www.cdph.ca.gov/Programs/CID/DCDC/Pages/COVID-19/Masks-for-Kids-Tips-and-Resources.aspx>

Face Shield Frequently Asked Questions



What are face shields, and how are they used for protection from COVID-19?

A face shield is a transparent barrier that covers the face and is typically open at the sides and bottom. A face shield is a form of personal protective equipment (PPE) primarily used by health care workers to protect their face (eyes, nose, and mouth) from splashes and sprays of body fluids. Face shields are not commonly used alone, but are often worn with other protective equipment, such as respirators or surgical masks, to protect the wearer from COVID-19. Examples include a nurse caring for a hospitalized COVID-19 patient or a health professional collecting a nasal sample from a person being tested for COVID-19.



In contrast, face coverings (cloth or surgical masks) that fit snugly over the nose and mouth are used to prevent the spread of COVID-19 to other people in the event that the wearer of the mask is infected with COVID-19 and doesn't know it, as well as to provide some protection for the wearer.

Can a face shield be used alone as a substitute for a face covering to prevent the spread of COVID-19?

No, a face shield alone cannot be substituted for a face covering under guidance of the California Department of Public Health (CDPH). Studies have found that SARS-CoV-2 can spread through small, airborne particles known as “aerosols” that are emitted when people talk, cough, or sneeze. These aerosols have been shown to remain suspended in the air for varying periods of time, depending on their size and air flow in the area. We expect, based on what is known about how aerosols behave, that the aerosols exhaled through the nose and mouth of someone wearing a face shield can easily travel around the open sides of a face shield.



Source: MIT Medical



November 2020 • © 2020, California Department of Public Health

Face Shield FAQ

If these aerosols contain the virus that causes COVID-19, other people may become infected.

What if I cannot wear a face covering due to a medical condition or other exemption?

Face shields may be considered for members of the public who cannot wear a face covering due to a medical condition or other exemption, although they may not work as well as face coverings in their ability to prevent the spread of COVID-19 to others. A cloth “drape” should be attached to the bottom edge of the face shield and tucked into the shirt to minimize gaps between the face and face shield. The drape can be made using cloth material and taped to the bottom of the face shield; face shields with drapes are also available through some vendors. For situations in workplaces where a worker who is required to wear a face covering (other than a respirator) cannot comply, Cal/OSHA currently considers a face shield plus drape an acceptable alternative. To see the list of exemptions from wearing a cloth face covering, see the CDPH *Guidance on the Use of Cloth Face Coverings*.



What attributes should I look for in a face shield?

The following attributes are strongly recommended when purchasing or manufacturing a face shield:

- Extends down below the chin
- Extends around to the ears
- No gap between the forehead and the visor (or cover the gap)
- Addition of a cloth drape extending from the bottom edge of the shield and tucked into the shirt or collar, when a respirator, mask, or cloth face covering is not worn.



November 2020 • © 2020, California Department of Public Health

Physical Distancing

According to California Department of Public Health (CDPH), recent evidence indicates that in-person instruction can occur safely without minimum physical distancing requirements when other mitigation strategies (e.g., masking) are implemented.

There will be no minimum physical distancing requirements on campus, but physical distance will be maximized as much as possible in all settings.

Recess

For playground use students will wash their hands before and after.

Equipment should be cleaned between use, or at least once daily.

No physical distancing requirements during recess.

Meals

Students will be able to eat breakfast and lunch on campus.

Maximize physical distance as much as possible while eating (especially indoors). Arrange for eating outdoors as much as feasible.

Clean frequently touched surfaces. Surfaces that come in contact with food should be washed, rinsed, and sanitized before and after meals.

Students in elementary schools will be eating lunch with their own classrooms. No mixing of classrooms at the tables.

School Bus

Face coverings must be worn at all times by students and staff, unless they meet exemptions listed in the face covering section.

Distance will be maximized on buses, to the extent possible.

Hand sanitizer will be available for all staff and students as well.

Cleaning will occur after each run, or as frequent as possible.

A minimum of two windows will be kept open on school buses at all times while transporting students to improve airflow. If an installed ventilation system is used on a school bus, it will be set to maximize outdoor air and not set to recirculate air.

Healthy Hygiene Practice

All students and staff will be taught proper handwashing practices, Teaching may include:

- Return demonstration
- Video instructions
- Staff training will be created and process defined by Risk Management

All classrooms and offices have access to hand sanitizer and/or hand washing stations.

All students and staff should wash hands, or use hand sanitizer if soap and water is not available, at increased frequencies.

- Education will be provided on how to properly and safely use hand sanitizer for staff and students.

Handwashing times need to be built in the daily activities in classrooms for students, staff, and visitors when:

- Entering and exiting a classroom
- Before and after meals
- Before and after using the restroom
- After sneezing or coughing into a tissue
- Before and after using a shared item
- Before and after playground use

Provide continual reinforcement of proper hand hygiene practices throughout.

Continuity of Services

Student academic services and needs will continue to be provided in addition to students' social, emotional, mental health, and other needs such as student health and food and nutrition services.

Support and resources for staff social, emotional and mental health needs will also continue through the EGUSD employee assistance program.

Appropriate accommodations for children with disabilities with respect to health and safety policies will continue to be provided through the EGUSD Special Education Department.

Health Screenings for Students and Staff

Screening:

Staff and students will be instructed to take their temperature and check for symptoms at home daily prior to coming to work or school:

- Families and staff must report fever/symptoms to their school and work site.
- Stay home if a student or staff has a fever, other symptoms, or have come in close contact with a person diagnosed with COVID-19.

Education and communication to staff and families on how to properly take temperatures and check for COVID-19 symptoms daily.

Training will be completed for staff on how to recognize COVID-19 symptoms in staff and students.

Symptoms on campus:

- Students who are symptomatic on campus will be sent to the COVID-19 Symptom Isolation (COSI) room to be assessed by a trained staff.
- Parents/guardians will be called to pick up student as soon as possible.
- Cleaning of the COSI room will be done in-between students or as frequently as possible.
- Staff who are symptomatic on campus will be sent home by their supervisor.
- For all cases, it will be recommended that they to reach out to their physician and take a COVID-19 test if needed.
- All symptomatic students and staff will be referred to one of the 11 EGUSD COVID Clinic Testing sites to receive a rapid antigen test. It is recommended to also take a confirmatory PCR test at the same time, also offered at the EGUSD COVID Clinic Testing sites, but a PCR test is not required for symptomatic individuals. PCR test for symptomatic individuals is only required if there is a loss of taste or smell. [More information about the BinaxNow COVID-19 Rapid Test can be found here.](#)
- For students and staff who receive a negative COVID-19 test result may return to work or school after symptoms have significantly improved and have been at least 24 hours fever free without the use of medications.
- A negative rapid antigen at-home test result will not be accepted to clear to return to work or school. Testing must be completed at a medical facility, local pharmacy, or EGUSD COVID Clinic testing site.
- Follow SCPH symptom decision forest for students and staff.

Daily Home Screening for Students

Parent/Guardian: Please complete this short check for your child each morning before coming on campus. If any of the boxes are checked, please keep your child home and report to the school site.

Section 1: Symptoms

If your child has any of the following symptoms, that indicates a possible illness that may decrease the student's ability to learn and also put them at risk for spreading illness to others. Please check your child for these symptoms:

- | | |
|--------------------------|-----------------------------------------------------------------------------------------------------------------------------------------------------|
| <input type="checkbox"/> | Temperature 100.4 degrees Fahrenheit or higher |
| <input type="checkbox"/> | Sore throat |
| <input type="checkbox"/> | New uncontrolled cough that causes difficulty breathing (for students with chronic allergic/asthmatic cough, a change in their cough from baseline) |
| <input type="checkbox"/> | Diarrhea, vomiting, or abdominal pain |
| <input type="checkbox"/> | New onset of severe headache, especially with a fever |

Section 2: Close Contact/Potential Exposure

- | | |
|--------------------------|-----------------------------------------------------------------------------------------------------------------------|
| <input type="checkbox"/> | Had close contact (within 6 feet of an infected person for at least 15 minutes) with a person with confirmed COVID-19 |
| <input type="checkbox"/> | Anyone in the household has been confirmed with COVID-19 |

DAILY COVID -19 CHECKLIST FOR STAFF

- Review this COVID-19 Daily Self Checklist **each day before reporting to work.**
- If you reply YES to any of the questions below, STAY HOME and call your supervisor.
- If you start feeling sick during your shift, notify your supervisor and go home.

Do you have a fever (temperature over 100.3F) without having taken any fever reducing medications?

Yes

No

Loss of Smell or Taste?

Yes

No

Muscle Aches?

Yes

No

Sore Throat?

Yes

No

Cough?

Yes

No

Shortness of Breath?

Yes

No

Chills?

Yes

No

Headache?

Yes

No

Have you experienced any gastrointestinal symptoms such as nausea/vomiting, diarrhea, loss of appetite?

Yes

No

Have you, or anyone you have been in close contact with been diagnosed with COVID-19?

Yes

No

Have you been asked to self-isolate or quarantine by a medical professional or a local public health official?

Yes

No



COVID-19 Symptom & Quarantine INTERIM Decision Forest for K-12 Schools

The Decision Forest is based on guidance from the California Department of Public Health and local recommendations from Sacramento County Public Health. It is updated regularly to align with evolving guidance. Schools should ensure they are using the latest version and discard all previous versions. The Decision Forest provides general guidance for common scenarios, but cannot account for every possible situation. Schools requiring technical assistance can contact the SCPH Schools Team for guidance at SCPHschools@sacounty.net.

TREE #1: STUDENT OR STAFF WITH SYMPTOMS

Please Note: If an individual tested positive for COVID-19 in the previous 90 days, please proceed to Tree #5.

Student or staff has any of the following **NEW** symptoms:

- Fever or chills
- Cough
- Shortness of breath or difficulty breathing
- Fatigue
- Muscle or body aches
- Headache
- New loss of taste or smell
- Sore throat
- Congestion or runny nose
- Nausea or vomiting
- Diarrhea

Exclude from school.

EITHER

Test* for COVID-19.

Receive an **alternative named diagnosis** from a health care provider.

POSITIVE

NEGATIVE

If no test or alternative diagnosis, **exclude** for 10 days from symptom onset. May return on Day 11 if at least 24 hours have passed since fever and symptoms have improved significantly.

May return to school if at least 24 hours have passed since fever and symptoms have improved significantly.

ISOLATION:
Individual must **isolate** at home. Isolation can end **5 days** after symptom onset if:
at least 24 hours have passed since fever and symptoms have improved significantly
AND
individual tests negative (preferably antigen) with specimen collected on or after **Day 5**.
If unable to test, choose not to test, or positive test on or after Day 5, individual may return 10 days after symptom onset (**Day 11**).

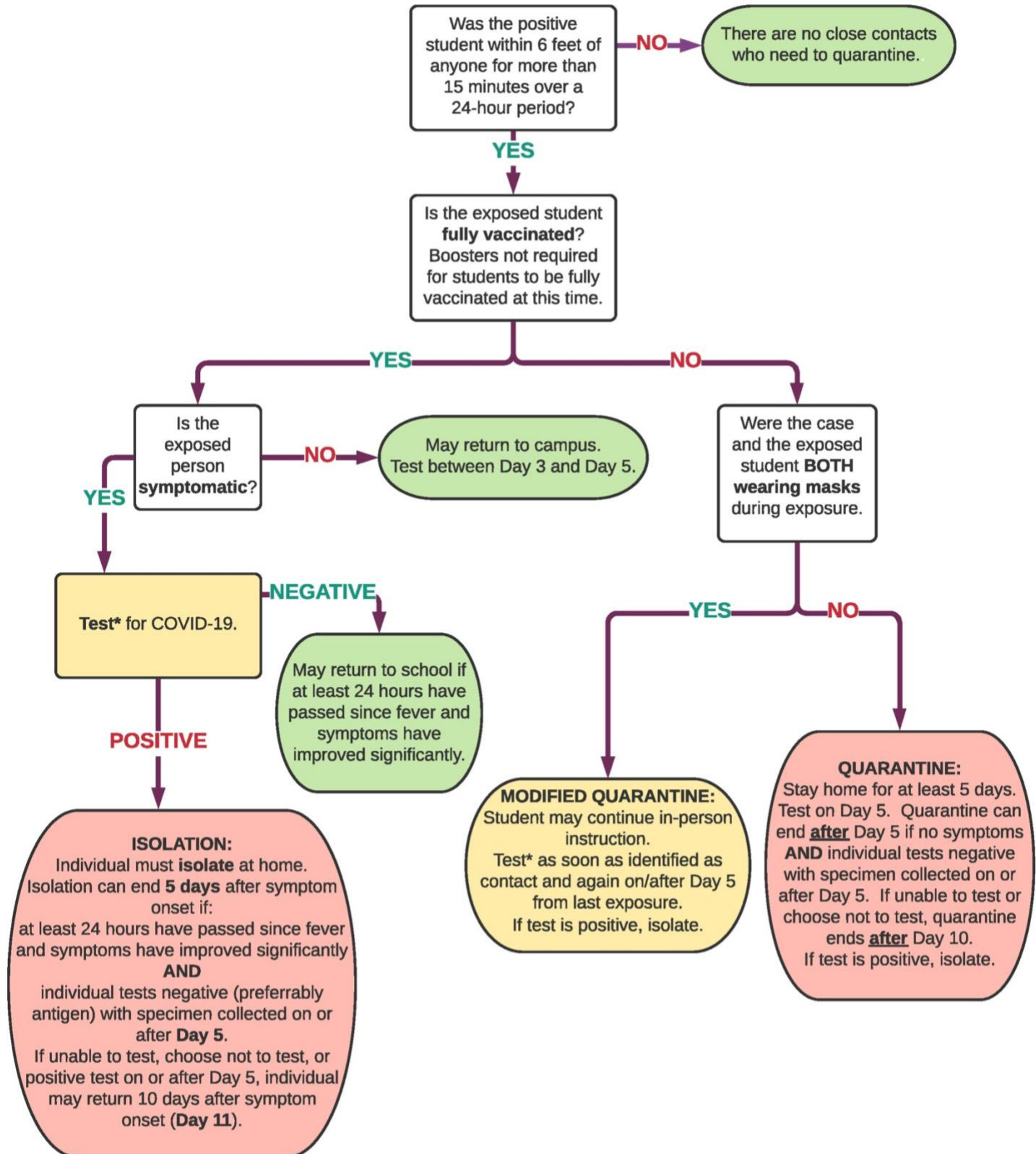
CONTACT TRACING:
Variable by school district based on CDPH Guidance for K-12 Schools.

CONTINUE TO TREE #2 FOR STUDENTS OR TREE # 3 FOR STAFF

* PCR, rapid antigen, and OTC home testing are acceptable testing methods. Home test kits used to exit isolation/quarantine should be accompanied with an attestation declaring that the test specimen was obtained from the individual represented on the form, including the date the specimen was collected, and that the test was processed according to the instructions provided.

January 20, 2022

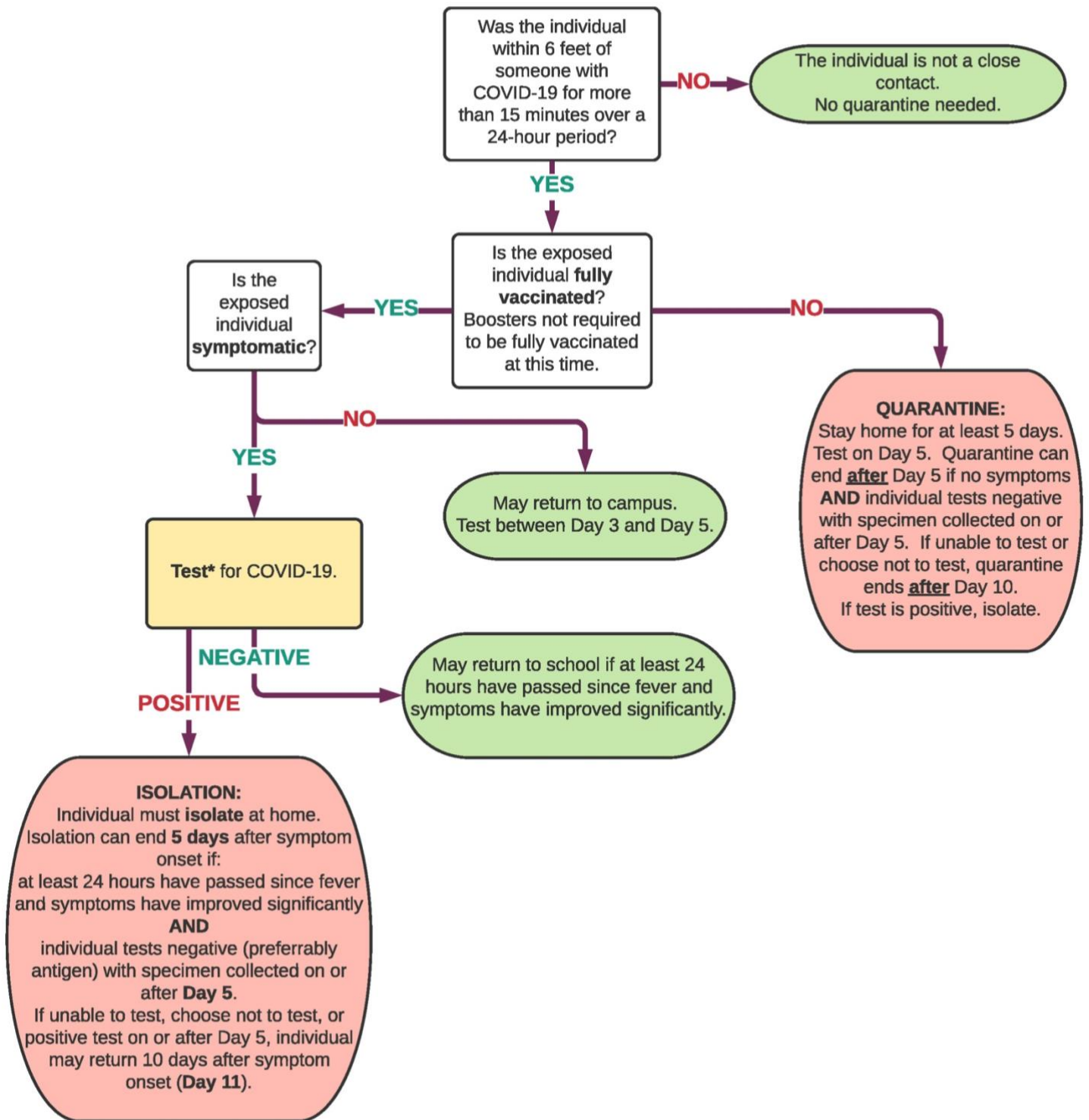
TREE #2: STUDENT EXPOSURE AT SCHOOL



* PCR, rapid antigen, and OTC home testing are acceptable testing methods. Home test kits used to exit isolation/quarantine should be accompanied with an attestation declaring that the test specimen was obtained from the individual represented on the form, including the date the specimen was collected, and that the test was processed according to the instructions provided.

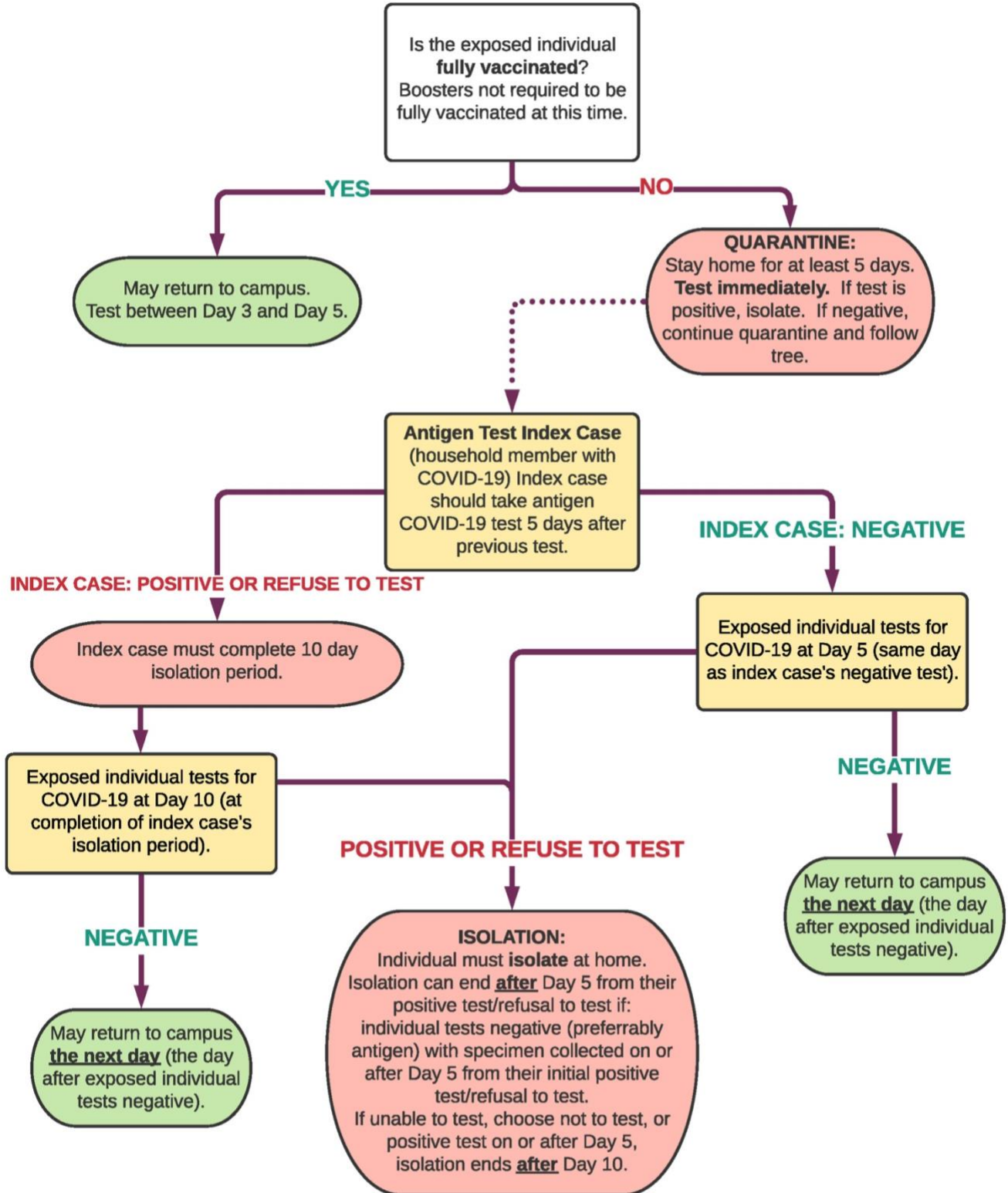
"Exposure at School" is for school settings in which students are supervised by school staff, including indoor or outdoor school settings and school buses.
January 20, 2022

TREE #3: STUDENT EXPOSURE OUTSIDE OF SCHOOL OR STAFF EXPOSURE ON OR OFF CAMPUS



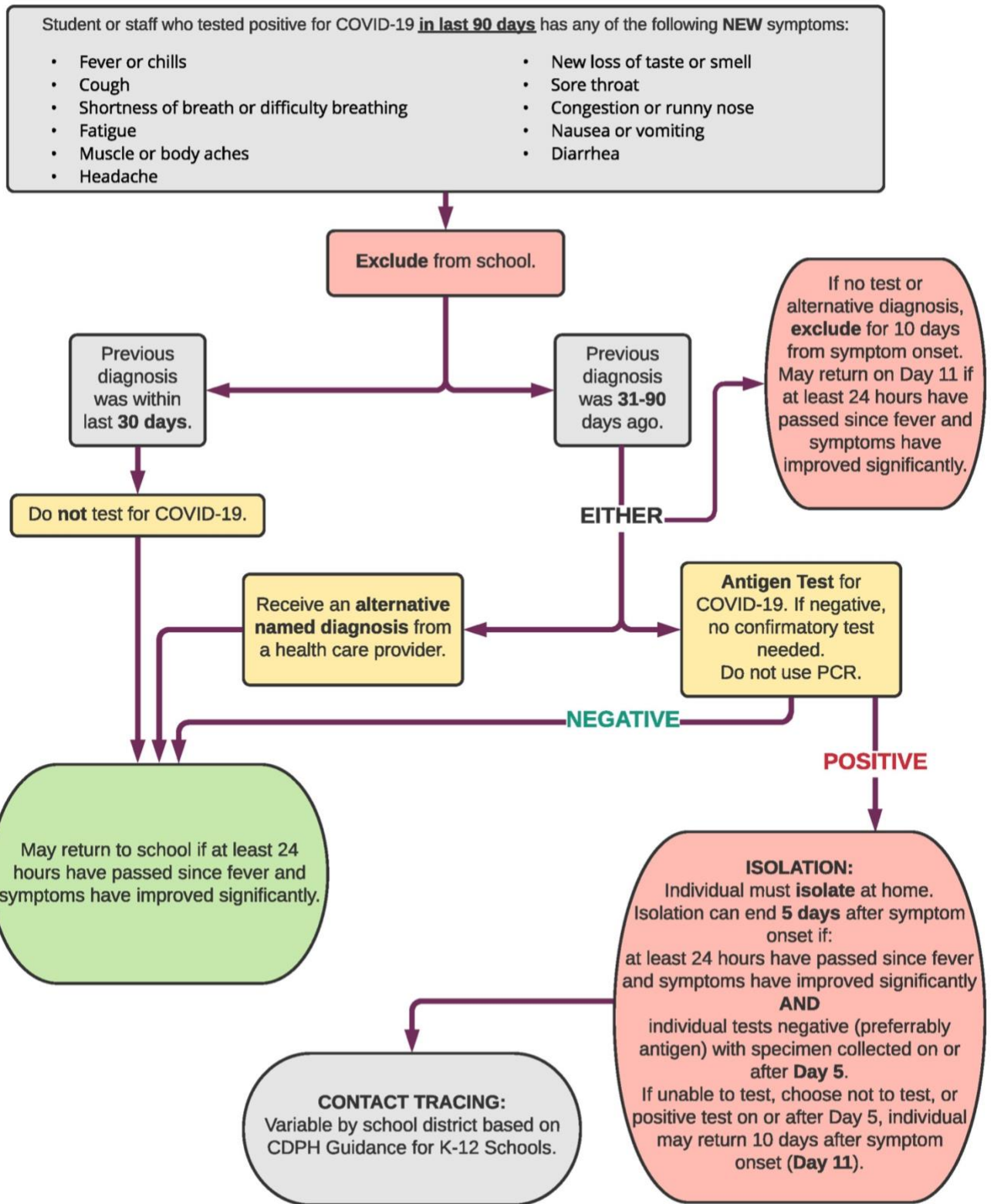
* PCR, rapid antigen, and OTC home testing are acceptable testing methods. Home test kits used to exit isolation/quarantine should be accompanied with an attestation declaring that the test specimen was obtained from the individual represented on the form, including the date the specimen was collected, and that the test was processed according to the instructions provided.
January 20, 2022

TREE #4: STUDENT OR STAFF LIVES WITH SOMEONE WHO TESTS POSITIVE



* PCR, rapid antigen, and OTC home testing are acceptable testing methods. Home test kits used to exit isolation/quarantine should be accompanied with an attestation declaring that the test specimen was obtained from the individual represented on the form, including the date the specimen was collected, and that the test was processed according to the instructions provided.
January 20, 2022

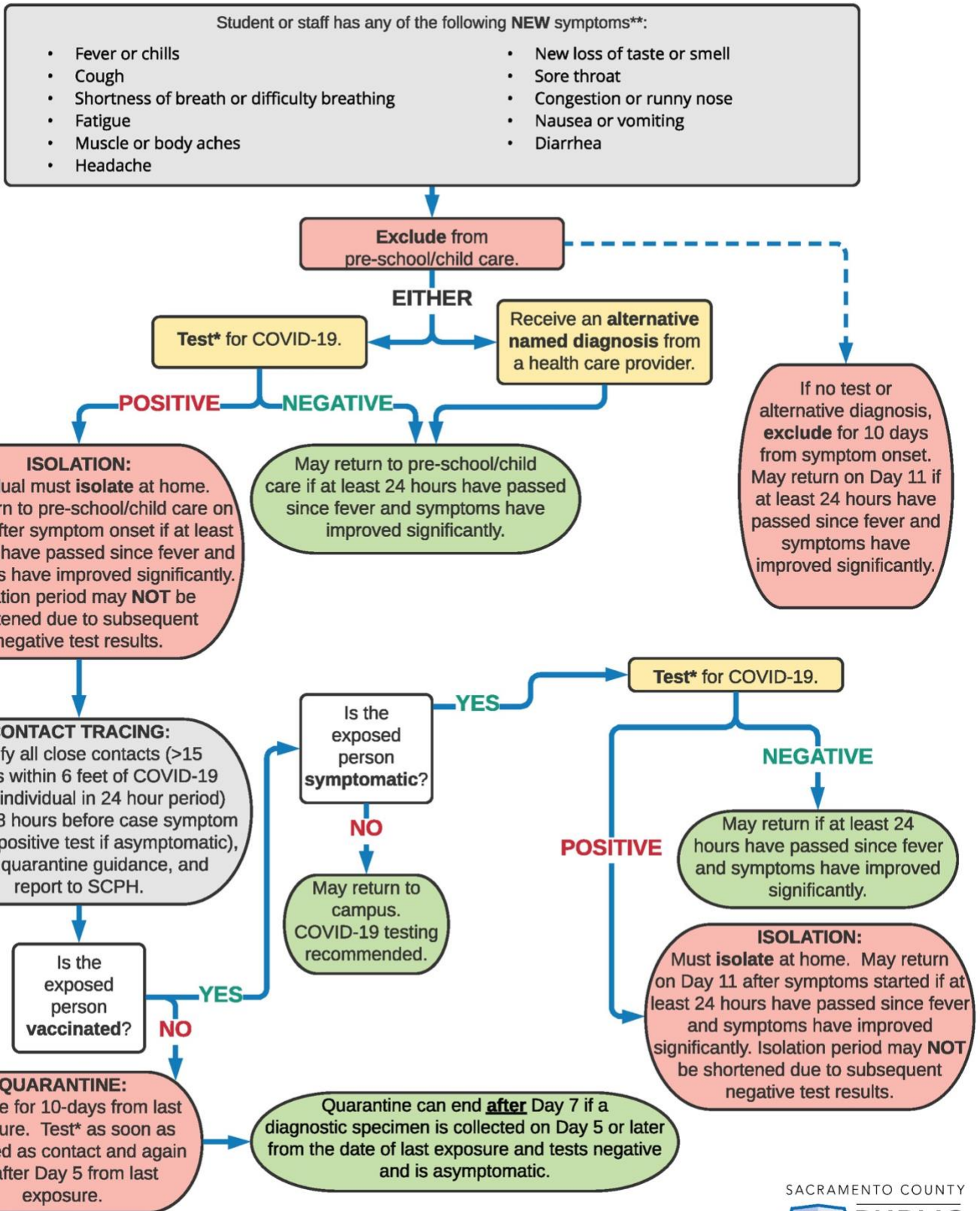
TREE #5: PERSON WHO TESTED POSITIVE FOR COVID-19 IN PAST 90 DAYS



Individuals who have tested positive for COVID-19 in the last 90 days may be exempt from surveillance testing.
January 20, 2022



COVID-19 Symptom & Quarantine Decision Tree for Pre-Schools & Child Care



* PCR or rapid antigen test are acceptable.

Negative rapid antigen test only requires confirmatory PCR on patient with loss of taste or smell.

** If someone had COVID-19 in the last 90 days and has symptoms, contact SCPHschools@sacounty.net for assistance.

November 9, 2021

Identification and Tracing of Contacts

Supervisor and administrators must be notified and they will inform their school nurse or health coordinator of any positive COVID-19 cases.

School nurse or health coordinator will:

- Follow-up and confirm test results with the identified positive case and conduct in-district contact tracing.
- Contact Sacramento County Public Health (SCPH) for confirmation and recommendations.

Students/staff who test positive must self-isolate per the Sacramento County Public Health Decision Forest guidelines.

Exposure notifications will be sent to all staff and families who were possibly exposed on campus.

If your child is considered a close contact to a positive case and your child is fully vaccinated and has no symptoms, they may continue to attend school and do not have to quarantine at home. Parent/guardian will be asked to provide or send either a printed copy or an electronic copy of their child's COVID-19 vaccine record to the school site.

Quarantine and Modified Quarantine

Quarantine guidelines for all outdoor close contacts, must follow same guidelines as indoor close contacts.

Students and staff who are not fully vaccinated against COVID-19 and live in the same household as an individual who tests positive must quarantine at home. Students and staff who are fully vaccinated against COVID-19 and are asymptomatic, do not have to quarantine at home even if they live with an individual who tests positive for COVID-19.

Quarantine recommendations for unvaccinated students for exposures when both parties were wearing a mask, as required in K-12 indoor and outdoor settings, including on the bus. For further CDPH K-12 School guidance, please go to <https://www.cdph.ca.gov/Programs/CID/DCDC/Pages/COVID-19/K-12-Guidance-2021-22-School-Year.aspx>

- a. When both parties were wearing a mask, unvaccinated students who are close contacts may undergo a **modified 10-day quarantine** as follows. They **may continue to attend school for in-person instruction if they:**
 - i. Are asymptomatic;
 - ii. Continue to appropriately mask, as required;
 - iii. Undergo at least twice weekly testing during the 10-day modified quarantine (testing available on-campus); and
 - iv. Continue to quarantine at home for all extracurricular activities at school, including sports, and activities within the community setting.
- b. Modified quarantine can end after Day 7 if a diagnostic specimen is collected on or after day 5 from the date of last exposure and tests negative. Proof of test results will be required.
- c. For families who do not respond or do not complete registration for testing at the school site, their children will need to continue to quarantine at home until they connect with the contact tracer or school site and complete registration for testing at the school.
 1. If students present on the next day to school after calls have been made by the contact tracer, Principals are to contact the family and inform them the student will need to go home until family completes the registration for testing.
 2. If parent chooses to test the student outside of school, they must provide proof of results. These tests cannot be home rapid tests. Test results must be provided by the dates determined by the contact tracer.

Quarantine recommendations for unvaccinated [close contacts](#) who were not wearing masks or for whom the infected individual was not wearing a mask during the exposure. For students who were not wearing masks, they do have to quarantine at home.

- a. For these contacts, those who remain asymptomatic, meaning they have NOT had any symptoms, may discontinue self-quarantine under the following conditions:
 - i. Quarantine can end after Day 10 from the date of last exposure without testing; OR
 - ii. Quarantine can end after Day 7 if a diagnostic specimen is collected on or after day 5 from the date of last exposure and tests negative.
- b. To discontinue quarantine before 14 days following last known exposure, asymptomatic close contacts must:
 - i. Continue daily self-monitoring for symptoms through Day 14 from last known exposure; AND
 - ii. Follow all recommended non-pharmaceutical interventions (e.g., wearing a mask when around others, hand washing, avoiding crowds) through Day 14 from last known exposure.

- c. If any symptoms develop during this 14-day period, the exposed person must immediately isolate, get tested and contact their healthcare provider with any questions regarding their care.

Staff quarantine guidelines you may find in the “COVID-19 Exposure Prevention Plan” section of this document.

Isolation recommendations

- a. For both vaccinated and unvaccinated persons, follow the CDPH [Isolation Guidance](#) for those diagnosed with COVID-19.

Staff Training and Family Education

Training will be provided for all staff in illness prevention (including handwashing, social distance, face coverings, and proper cleaning and disinfecting), recognizing COVID-19 symptoms, etc.

Education provided to all students on illness prevention (including handwashing, and face coverings)—With clear guidance and directions, students in secondary and intermediate grades in elementary will be given the opportunity and means to clean their own work areas with cleaning technology that is safe for student use.

Identification and Reporting of Cases

When a student/staff member must quarantine/isolate: Quarantine/isolate will be determined by a physician, public health officer, school nurse and/or health coordinator.

Supervisor must inform their school nurse or health coordinator if at administrative facilities.

School nurse/health coordinator will notify the family/staff member when they need to quarantine.

Site school nurse will then notify the Health Coordinator.

Site school nurse/Health Coordinator will notify Sacramento County Public Health of positive cases on campus.

Health Coordinator will notify:

- Appropriate members of COVID-19 Case Response Team (CCRT).
- Custodial Manager for deep cleaning at site, when appropriate.
- And prepare appropriate exposure letters for distribution (Exposure notifications will be sent to all staff and families who were possibly exposed on campus.)

Close Contact Notification

Exposure Letter

If a parent reports that their child tested positive and/or a student on campus was symptomatic and tested positive for COVID-19 and/or if staff report testing positive then the school principal/designee sends an exposure letter via Synergy.

- All school staff notified
- Parents of students in class of positive student/staff notified
- Notification to include exposure dates
- Notification to include school name and class in all correspondence

Close Contact Letter

If a student/staff is identified as a close contact to a positive case on campus, the family/staff will be notified via telephone call by an EGUSD Contact Tracer.

Affected staff will be notified

- Parents of students of close contacts will be notified
- Notification will include the school name and affected classes
- Notification includes parent consent online pre-registration link to expedite testing process
- Notification includes an email contact for questions: egusdcom@egusd.net
- Secondary school notifications will copy school principal, SSHS and Communications Team

Communication Plans

Positive cases will be reported to the local health authorities and recorded and displayed on the district's COVID-19 Dashboard.

www.egusd.net/covid-dashboard

The dashboard provides a comprehensive overview of COVID-19 statistics for Elk Grove Unified School District. It includes filters for district location, year, and month, as well as buttons to view data by site level (Elementary, Non-School Site, High, Middle, Staff, Quinine). A donut chart shows the distribution of total cases by level, and a table lists specific sites with their respective positive and quarantine counts.

COVID-19 DASHBOARD

ACTIVE CASES: 0
ACTIVE QUARANTINE: 28
TOTAL CASES: 157
TOTAL QUARANTINE: 300

TOTAL CASES BY LEVEL:

- Elementary: 12
- High: 14
- Non-School Site: 27

| Site | Positive | Quarantine |
|-----------------------------------|----------|------------|
| Anna Kirchgater Elementary | 3 | 34 |
| Ariane Hein Elementary | 4 | 3 |
| Arnold Adreani Elementary | 3 | 2 |
| Arthur C. Butler Elementary | 1 | 2 |
| Barbara Comstock Morse Elementary | 2 | 1 |
| CW Dillard Elementary | 2 | |
| Calvine High School | 1 | 1 |
| Carroll Elementary | 1 | 2 |
| Cosumnes Oaks High School | 2 | 6 |
| Cosumnes River Elementary | 1 | 1 |
| David Reese Elementary | 3 | 2 |
| Edna Batey Elementary | 5 | 2 |
| Edward Harris, Jr. Middle | 2 | 3 |

External Links: [Sac County Dashboard](#) | [CAGOP - Request for Safety Resources](#)

Public Feedback and Opportunity for Comment and Incorporation in Development of Plan

Accompanying the initial post of the revised EGUSD COVID-19 Safety Plan a.k.a "Safe Return to In-Person Instruction and Continuity of Services Plan" will be a notice for input and feedback whereby the community will have a defined time to provide input/feedback through an online survey.

Once the input/feedback window has closed, the survey will be analyzed for major themes that may have emerged. Those major themes will be brought forth for consideration of incorporation.

Appendix 1: Sample Notifications – Close Contact

Student Exposure Letter

(Date)

Dear Parents/Guardians,

The public's health and safety is paramount to Elk Grove Unified School District (EGUSD) and Sacramento County Public Health (SCPH). On (Date), EGUSD was notified of an individual in your child's classroom who tested positive for COVID-19. This individual was last on campus on (Date). EGUSD is working closely with SCPH for guidance on this situation.

If your child was considered a close contact to a positive case, you will be contacted by EGUSD Health Services to review these guidelines and testing options.

According to California Department of Public Health's (CDPH), updated quarantine guidelines for schools, all students considered close contacts (being within 6 feet for 15 or more cumulative minutes throughout a 24-hour period) to the positive case may continue to attend in-person learning under modified quarantine as long as all students were appropriately wearing masks and;

- Are asymptomatic;
- Continue to appropriately mask, as required;
- Undergo at least twice weekly testing during the 10 days following the last day of close contact;
- Continue to quarantine for all extracurricular activities at school, including sports, and activities within the community setting.

If your child is fully vaccinated and asymptomatic, they will not be placed under modified quarantine and do not have to undergo testing or quarantine from extracurricular activities.

In addition to our standard daily cleaning, a specially equipped crew will be dispatched for deep cleaning and sanitizing of the affected areas. It is advised to watch for the symptoms below and contact your physician if your child or family member displays any symptoms.

Symptoms of COVID-19 may include:

- Fever or chills
- Cough
- Shortness of breath or difficulty breathing
- Fatigue
- Muscle or body aches
- Headache
- New loss of taste or smell
- Sore throat
- Congestion or runny nose
- Nausea or vomiting
- Diarrhea

Once Sacramento County Public Health has released someone from isolation or they have completed quarantine, this person does not pose a risk of infection to other people.

We are sharing this information with you as part of our ongoing efforts to keep you informed about incidents that affect our campus. For the latest information on COVID-19, families are encouraged to visit the District's page with updates regarding COVID-19, SCPH webpage dedicated to COVID-19 (2019 Novel Coronavirus), or the CDC homepage.

If you would like more information on available free community COVID-19 testing sites, please visit, https://www.saccounty.net/COVID-19/Pages/Symptom-Screening_MobileTestingSite.aspx for information on how to schedule an appointment.

Sincerely,

(Signature(s): Principal and/or School Nurse

EXAMPLE

Staff Exposure Letter

(Date)

Dear Staff,

On (Date), we were notified of an individual who tested positive for COVID-19. The individual was last on site on (Date). We have protocols in place for a situation such as this and we are following them with the assistance of our public health partners, who are closely guiding our response. We are working with Sacramento County Public Health (SCPH) to support contact tracing efforts. Any staff or student who may have had close contact with the individual will be contacted by EGUSD Health Services and provided with guidance related to any potential quarantining or testing.

In addition, we will take extra precautions to clean and disinfect ALL facilities visited and equipment utilized. We take these steps to ensure that our schools and facilities remain safe for all of our employees.

It is advised to watch for COVID-19 symptoms and contact your physician if you or a family member displays any symptoms. Please contact your direct supervisor if you display COVID-19 symptoms and do not come to work if sick.

Symptoms of COVID-19 may include:

- Fever or chills
- Cough
- Shortness of breath or difficulty breathing
- Fatigue
- Muscle or body aches
- Headache
- New loss of taste or smell
- Sore throat
- Congestion or runny nose
- Nausea or vomiting
- Diarrhea

We will update you with any additional pertinent information when we receive it. It is our responsibility to keep the name of the individual confidential. As always, please remember to follow all protocols for your safety and the safety of others, and, most especially, thanks for all of the great work you are all doing in support of so many during these challenging times.

For any questions about leaves or absences, please contact Human Resources leaves desk at leaves@egusd.net.

If you would like more information on available free community COVID-19 testing sites, please visit, https://www.saccounty.net/COVID-19/Pages/Symptom-Screening_MobileTestingSite.aspx for information on how to schedule an appointment.

Sincerely,

[Office Administrator]