

# COVID-19 GUIDANCE FOR CHILDREN/STUDENTS AT CHILD CARE, PRE-SCHOOL, AND K-12 SCHOOLS

## CHILD/STUDENT WITH NEW SYMPTOMS OF ILLNESS

Children/students with symptoms of illness should stay home and test for COVID-19.

- If test is negative, may return if at least 24 hours have passed since fever and symptoms have improved significantly.
- If test is positive, stay at home for 5 days. Isolation can end after Day 5 if symptoms are not present or are resolving and a diagnostic specimen collected on Day 5 or later tests negative. Consistent use of a well fitted face mask while indoors at child care/school is **strongly recommended** through **Day 10**. If unable to test or choosing not to test, and symptoms are not present or are resolving, isolation can end after Day 10.

## CHILD/STUDENT EXPOSED TO PERSON WITH COVID-19 IN ANY SETTING

If potential exposure occurs at a school setting, parents/caregivers should be notified of the potential exposure.

Children/students with exposure to someone with COVID-19 may continue to take part in all aspects of child care or schooling, including sports and extracurricular activities, unless they develop symptoms or test positive for COVID-19. This includes children/students who have continuous household exposure (live with someone who has COVID-19). It is strongly recommended that exposed children/students wear a well-fitting mask indoors around others for at least 10 days following the date of last exposure, if not already doing so unless they are under age 2. It is recommended that the individual test for COVID-19 5 days after the exposure.

## CHILDREN/STUDENTS WHO HAVE TESTED POSITIVE FOR COVID-19 IN THE PAST 90 DAYS

Asymptomatic children/students that have tested positive for COVID-19 within the past 90 days are not required to quarantine or test for COVID-19 in response to a new COVID-19 exposure. However, if a child develops new symptoms after being exposed to COVID-19, they should quarantine and test.

## REPORTING OUTBREAKS TO SCPH

### Elementary Schools, Pre-Schools, & Child Care (Single Classroom Cohort)

For schools/grades where students are primarily with the same classroom cohort (e.g. elementary school, pre-school, child care), schools should report outbreaks to SCPH using the [online outbreak reporting module](#) when:

- At least **3** students in a **classroom cohort** are suspected, probable, or confirmed to have COVID-19 within a 14-day period.
- OR**
- At least **10%** of the **school population** are suspected, probable, or confirmed to have COVID-19 within a 14-day period.

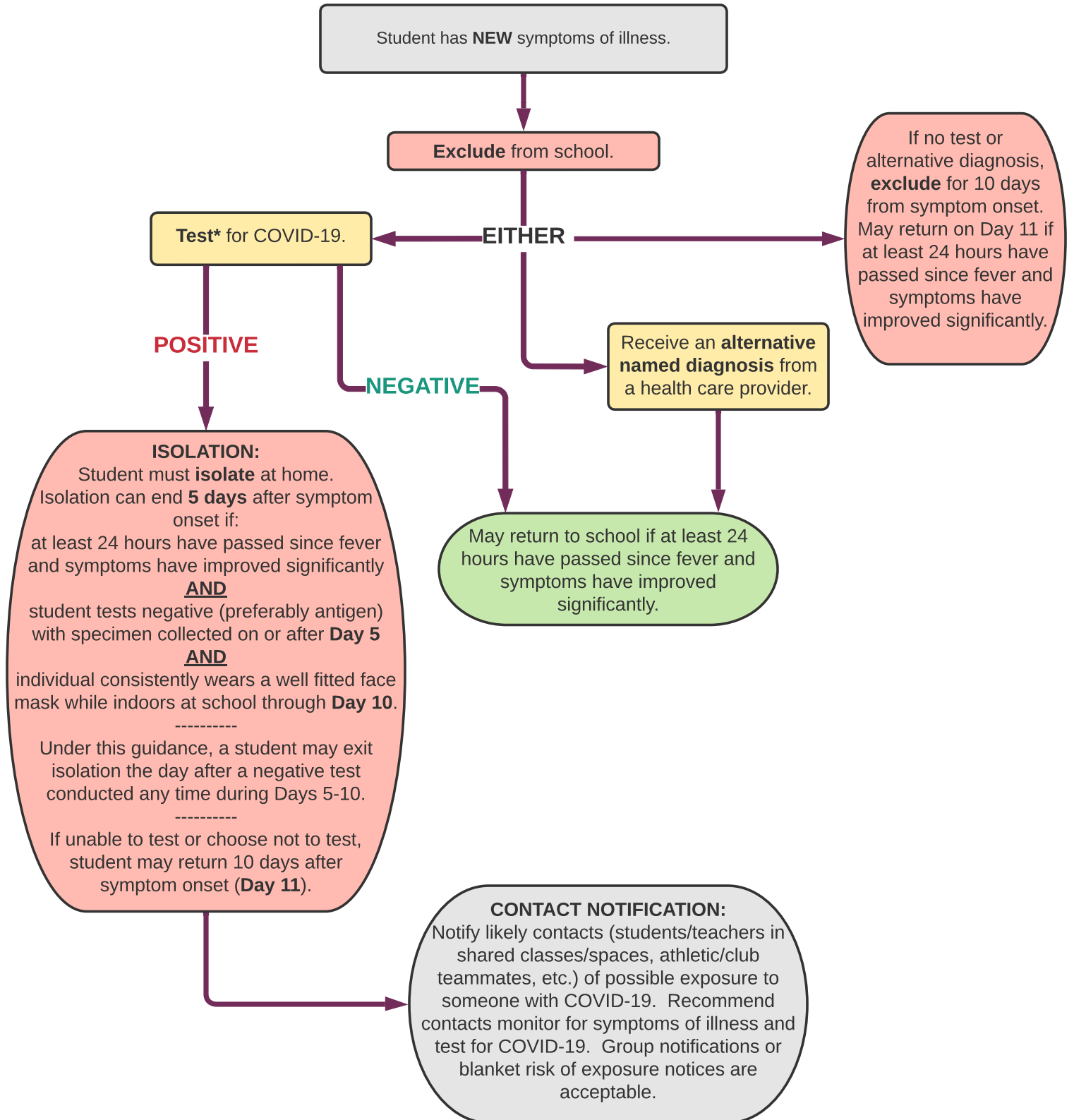
### **Middle/High Schools (Multiple Classroom Cohorts)**

For schools/grades where students are part of numerous classroom cohorts (e.g. middle and high school), schools should report outbreaks to SCPH using the [online outbreak reporting module](#) when:

- At least **10%** of a **grade level** is suspected, probable, or confirmed to have COVID-19 within a 14-day period.
- OR**
- At least **10%** of the **school population** is suspected, probable, or confirmed to have COVID-19 within a 14-day period.

# COVID-19 Decision Tree for Children/Students at Child Care, Pre-School, & K-12 Schools

**NOTE:** This tree is for children/students only. For staff, child care facilities and schools are required to follow all isolation and notification requirements outlined in the [Cal/OSHA ETS](#).



\* PCR or rapid antigen test are acceptable. Asymptomatic individuals who have tested positive for COVID-19 are not required to re-test for 90 days following their initial infection. However, if individuals develop new symptoms following a COVID-19 exposure, they should isolate and test.

August 30, 2022