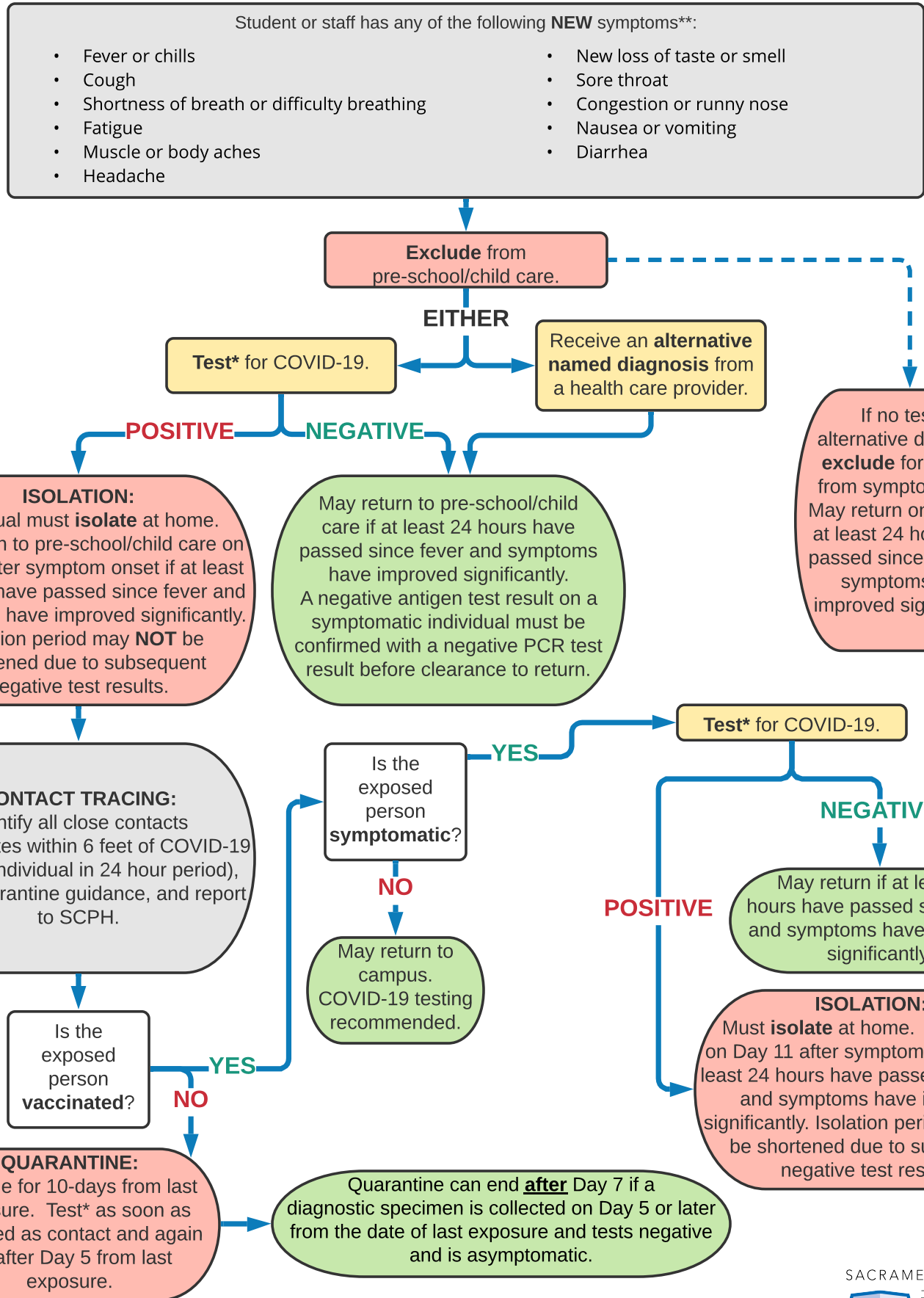


COVID-19 Symptom & Quarantine Decision Tree for Pre-Schools & Child Care



* PCR or rapid antigen test are acceptable. Negative rapid antigen test on symptomatic patient must be confirmed with PCR.

** If someone had COVID-19 in the last 90 days and has symptoms, contact SCPHschools@sacounty.net for assistance.