

RESPIRATORY SYSTEM
(LT. BLUE)

MUSCULAR SYSTEM
(ORANGE)

SKELETAL SYSTEM
(PURPLE)

DIGESTIVE SYSTEM
(GREEN)

LUNGS	RECTUS FEMORIS	PATELLA	STOMACH
BRONCHUS	GASTROCNEMIUS	HUMERUS	MOUTH
LARYNX	BICEPS	CRANIUM	LIVER
AVEOLI	PECTORALIS MAJOR	RIB CAGE	SMALL INTESTINE
CILIA	QUADRICEPS	FEMUR	LARGE INTESTINE

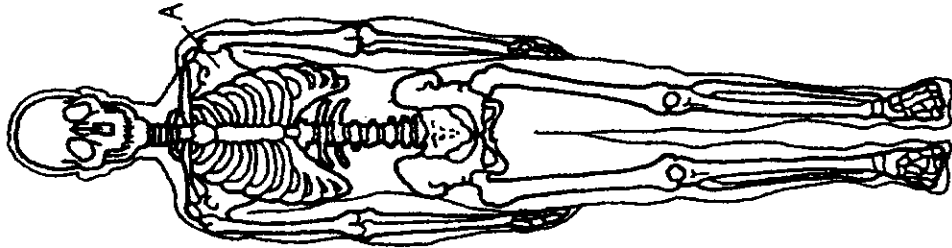
NERVOUS SYSTEM
(BLUE)

INTEGUMENTARY SYSTEM
(BROWN)

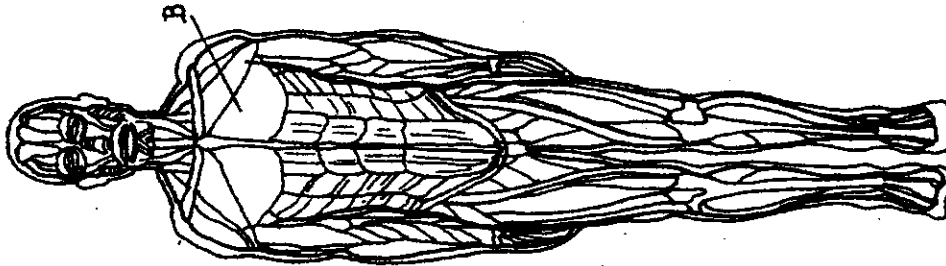
CIRCULATORY SYSTEM
(RED)

BRAIN	HAIR	HEART
EAR/EYE/NOSE	TOENAILS	AORTA
SPINAL CORD	FINGERNAILS	CAPILLARIES
NERVES	SKIN	ARTERIES
		VEINS

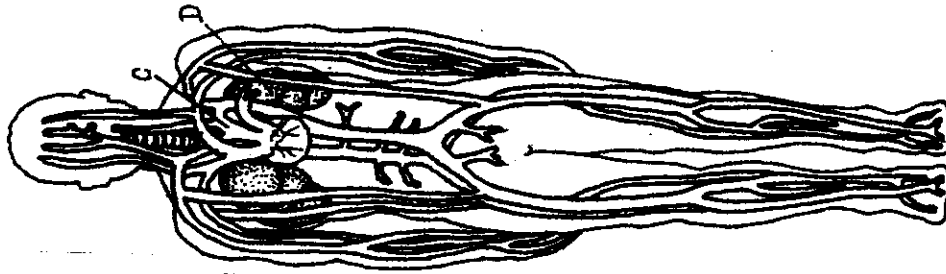
VERTEBRATE ORGANIZATION



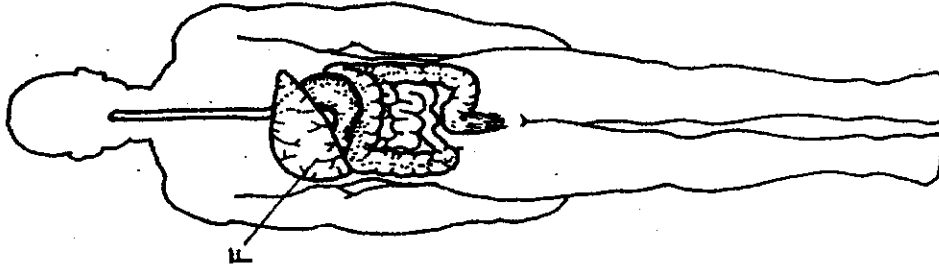
SKELETAL SYSTEM
(PURPLE)



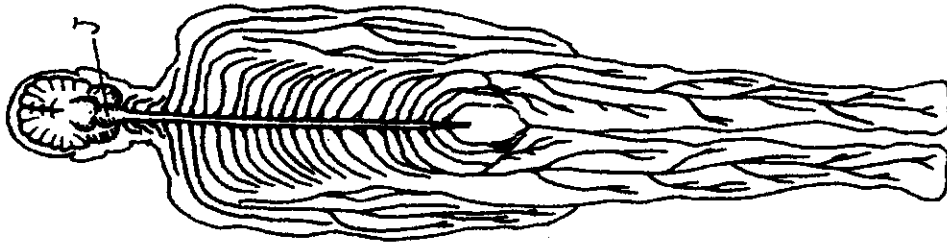
MUSCULAR SYSTEM
(ORANGE)



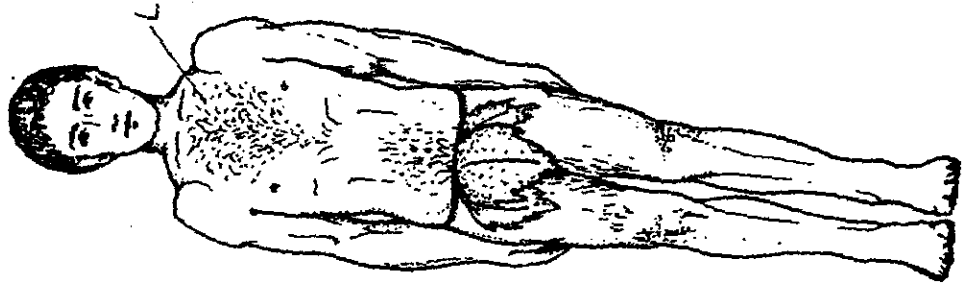
CIRCULATORY / RESPIRATORY SYSTEMS
(RED / LT. BLUE)



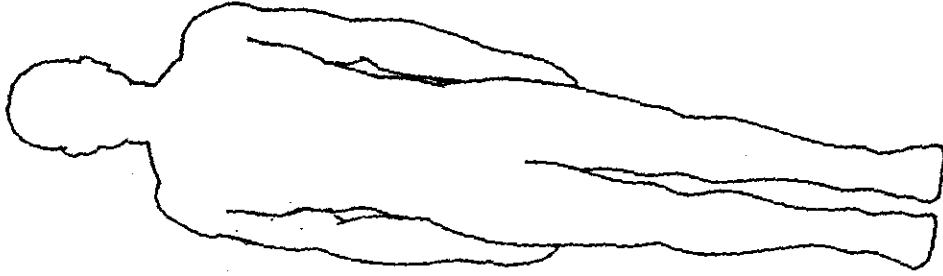
DIGESTIVE SYSTEM
(GREEN)



NERVOUS SYSTEM
(DARK BLUE)
PG 2



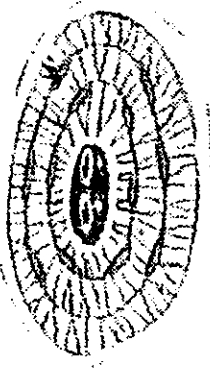
ORGANISM
(HUMAN)



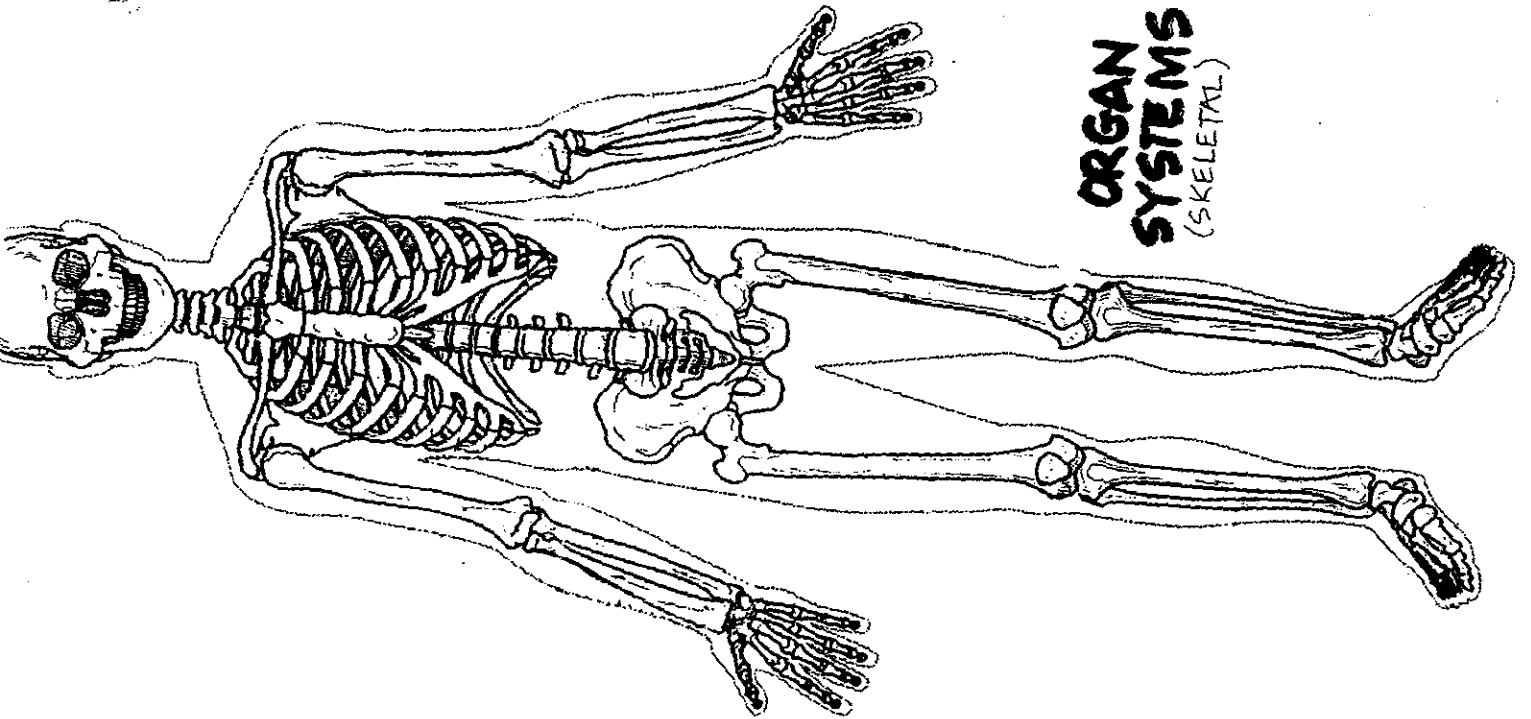
ORGANELLES
(NUCLEUS)

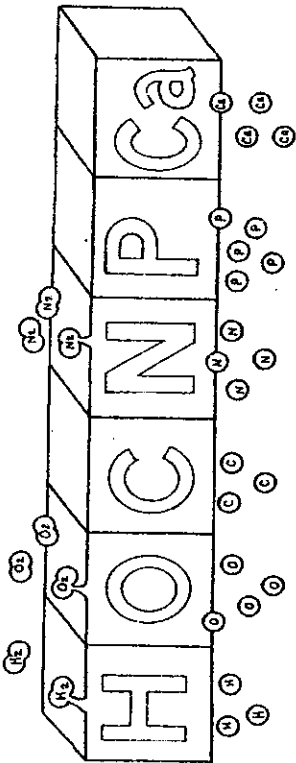


CELLS
(BONE CELL)

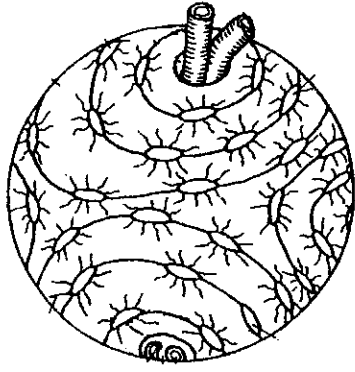


ORGAN SYSTEMS
(SKELETAL)

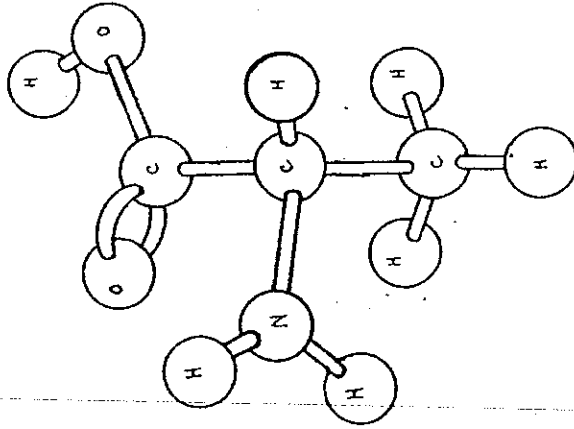




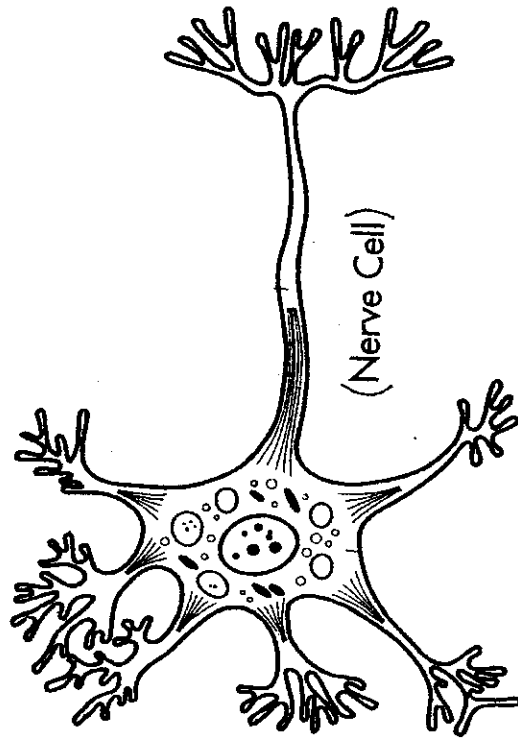
ATOMS



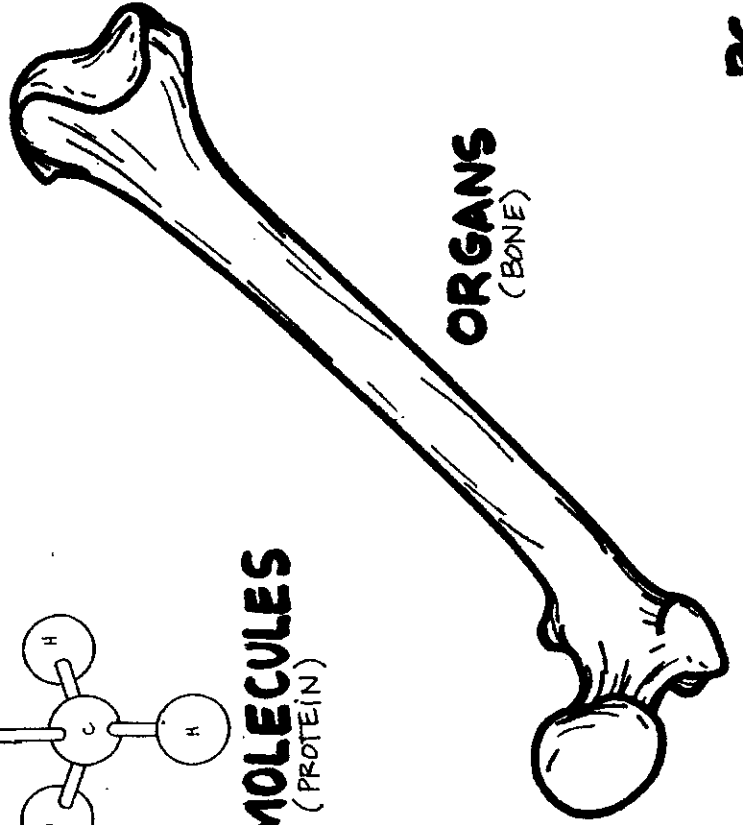
TISSUES
(BONE CELLS)



MOLECULES
(PROTEIN)



CELLS



ORGANS
(BONE)

TAPE 6

TAPE 6

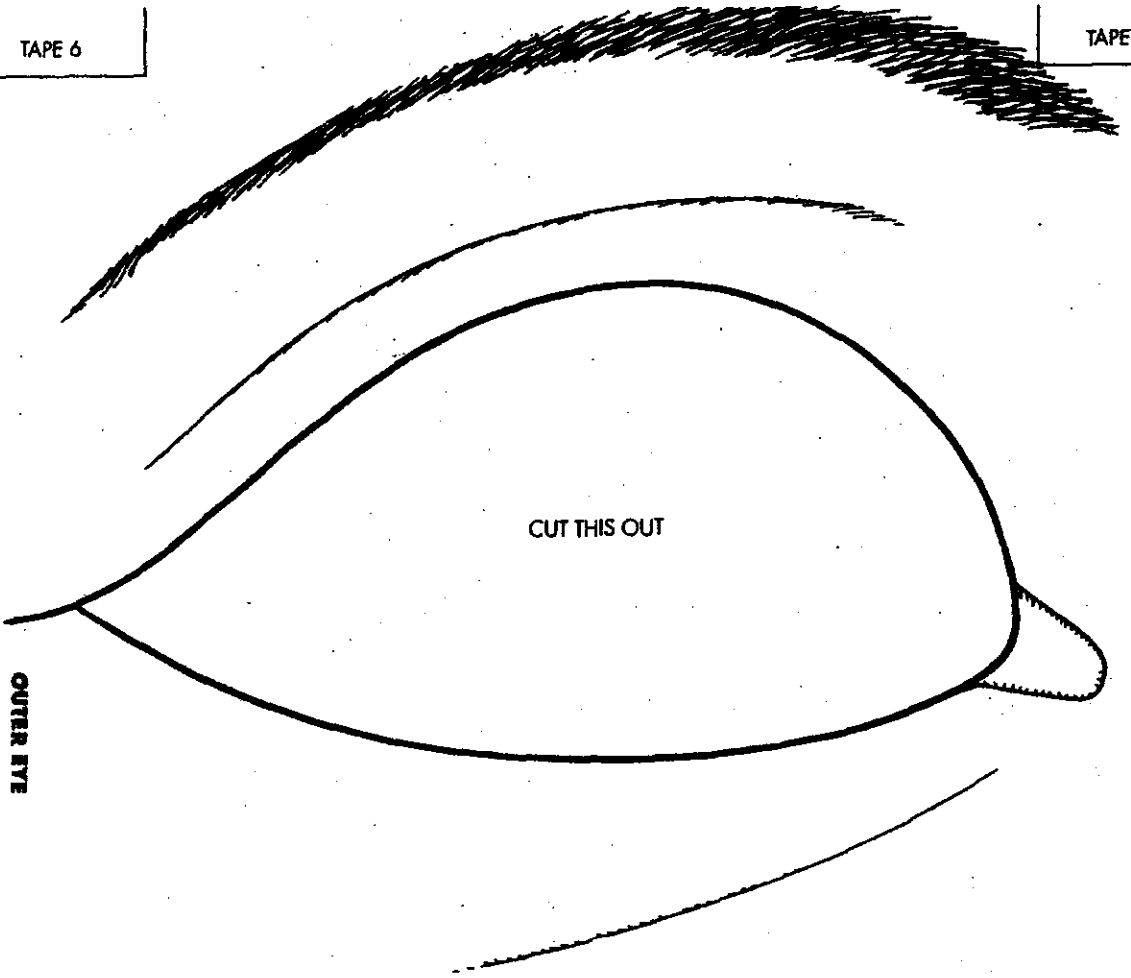
CUT →

COLOR
FLESH
COLOR.

ADD EYELASHES

OUTER EYE

CUT THIS OUT



CUT →

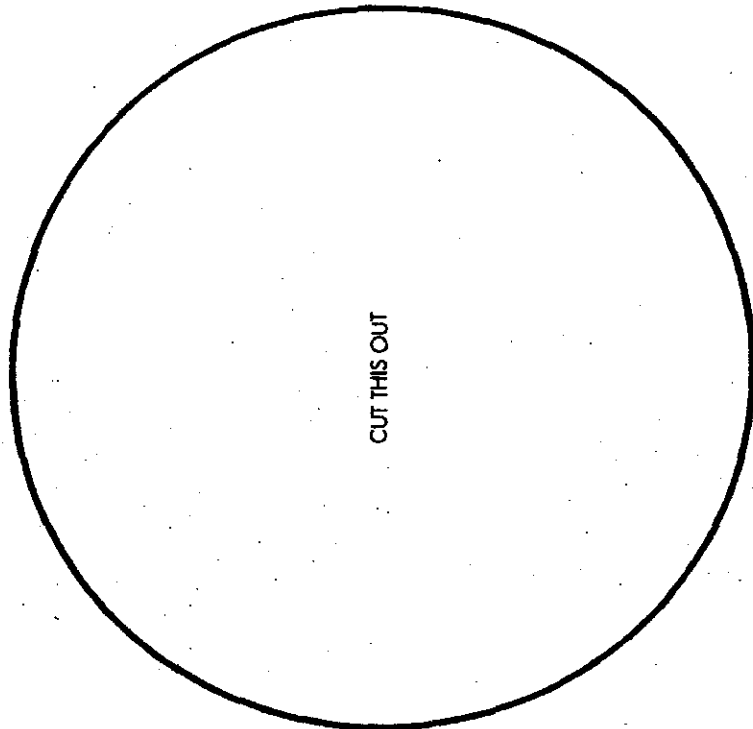
TAPE 5

TAPE 5

NO COLOR!

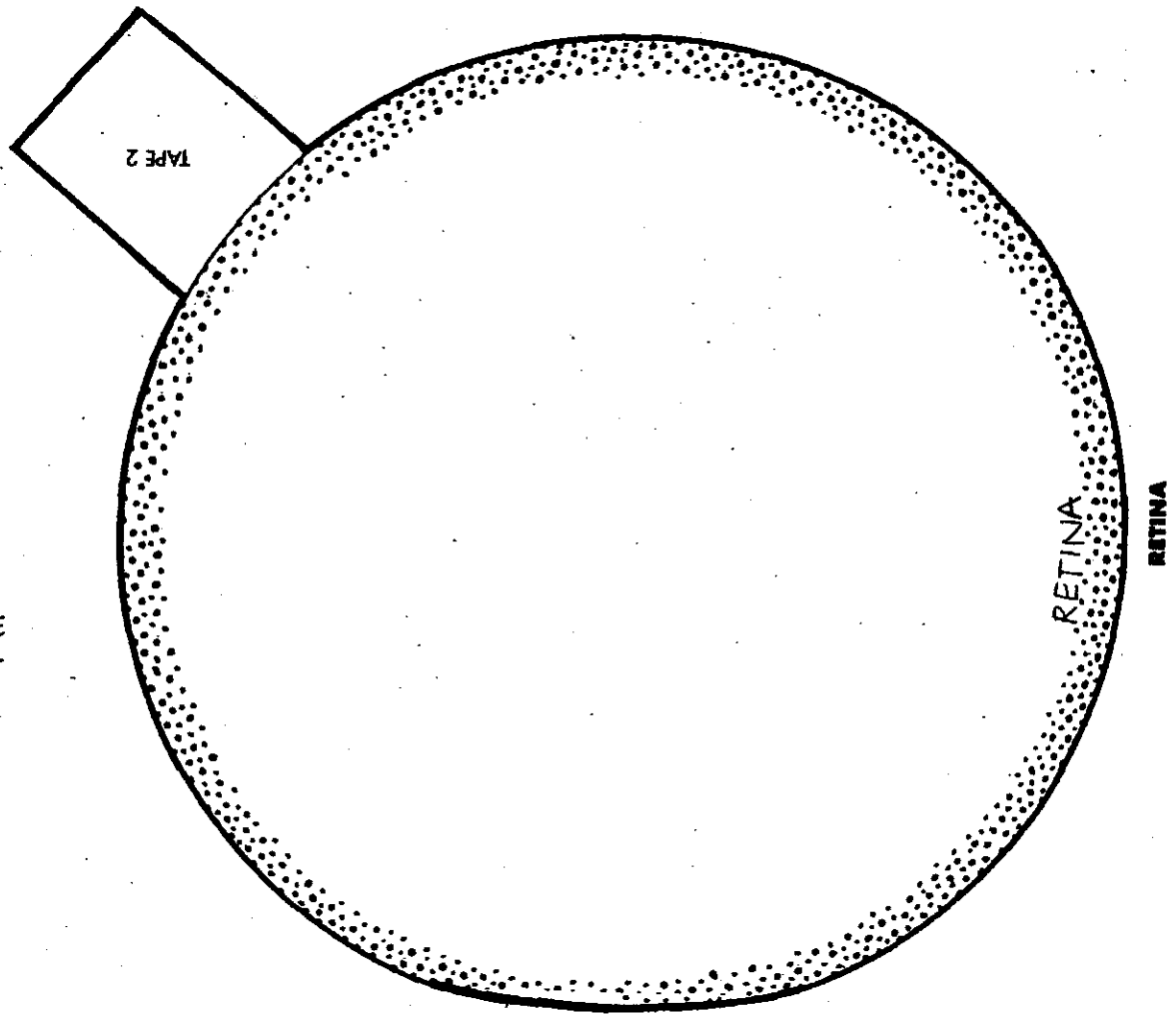
CUT THIS OUT

CORNEA

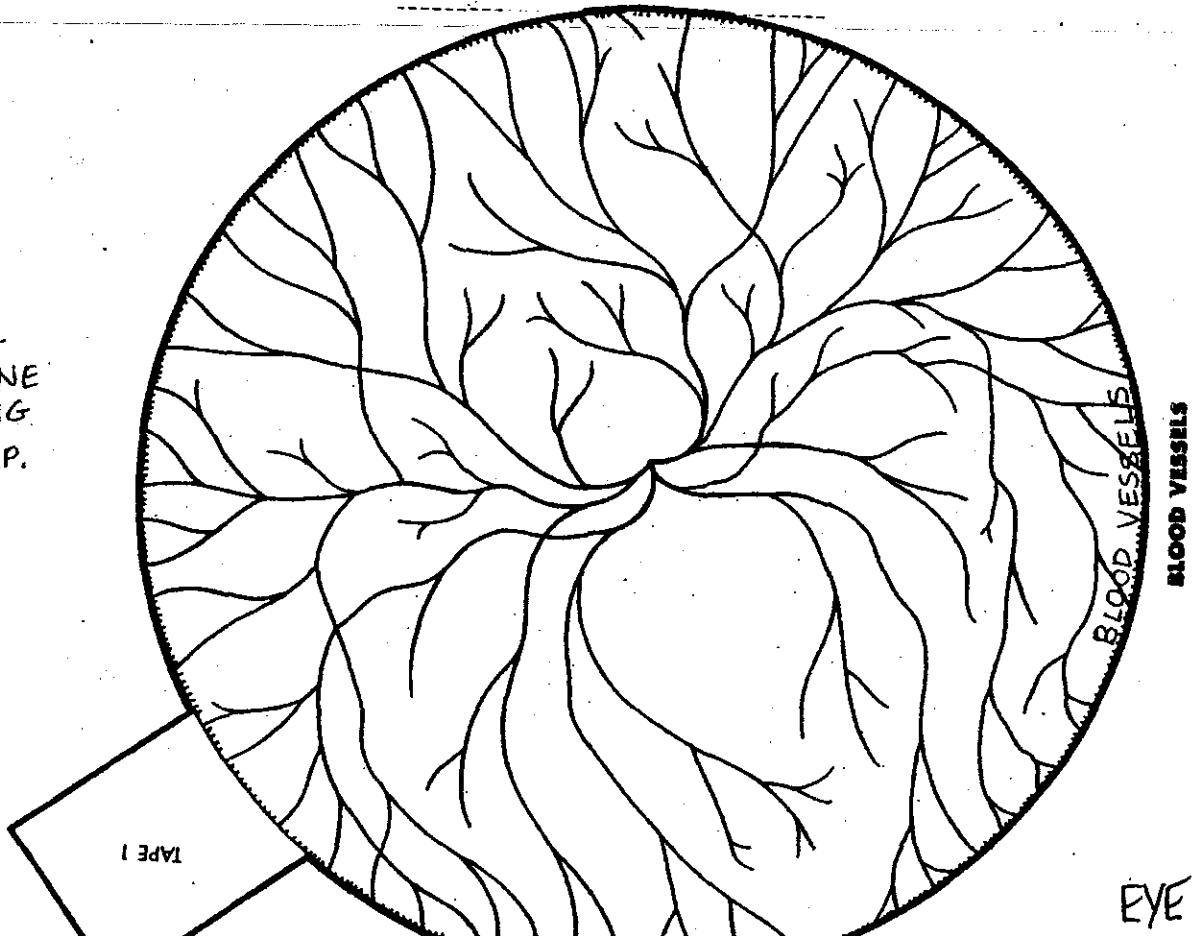


EYE

H9



- COLOR PINK
- CUT ALONG SOLID LINE INCLUDING THE FLAP.

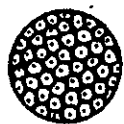


- COLOR RED
- CUT ALONG SOLID LINE INCLUDING THE FLAP.

TAPE 3

TAPE 1

COLOR
OPTIC
NERVE
YELLOW



OPTIC NERVE

TAPE 2

TAPE 5

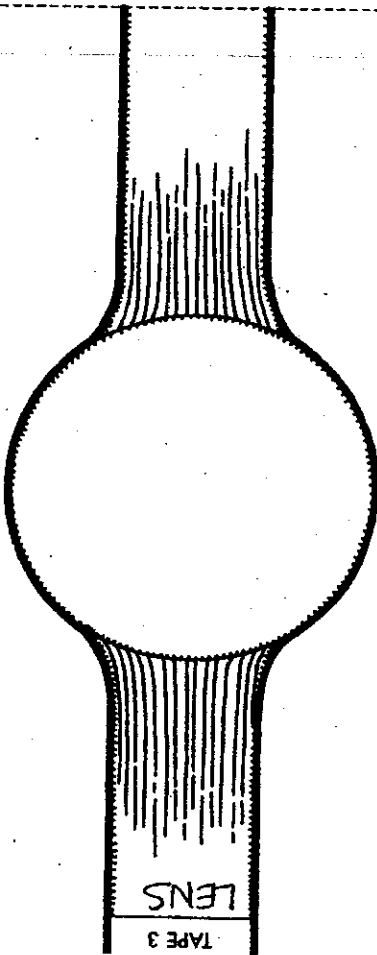
TAPE 4

TAPE 5

CUT →
→ CUT →

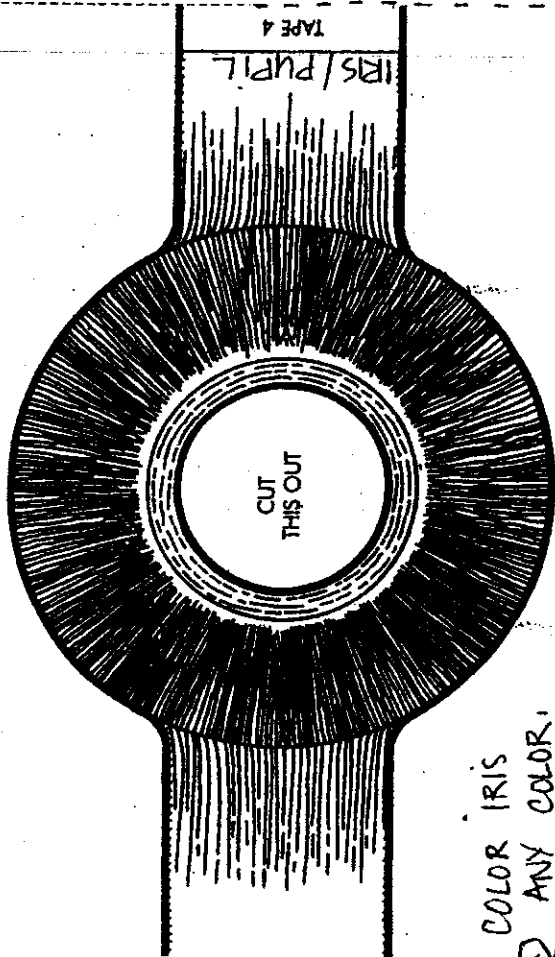
- COLOR LENS BLACK
- CUT ALONG SOLID LINES INCLUDING FLAP

LENS



LENS
TAPE 3

IRIS AND PUPIL



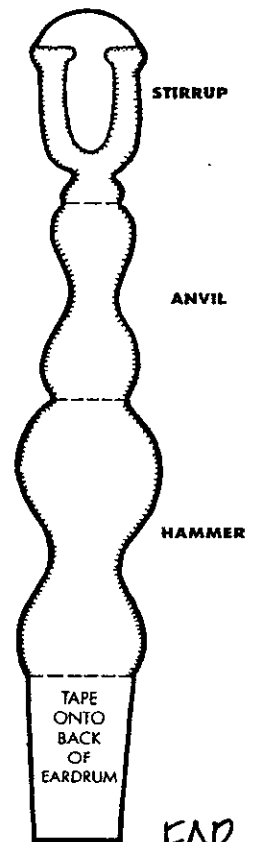
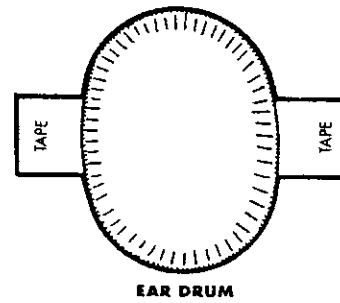
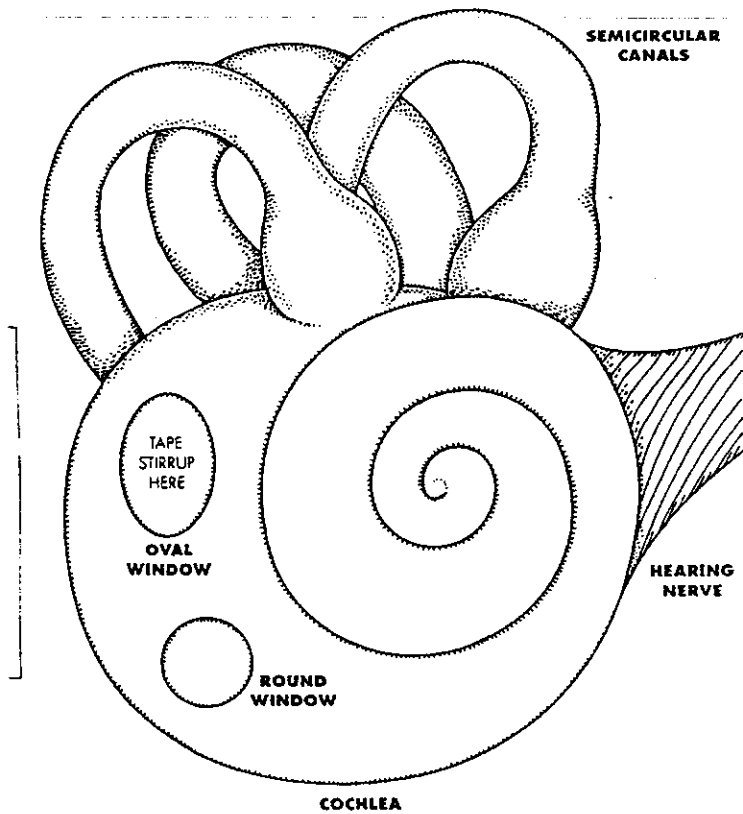
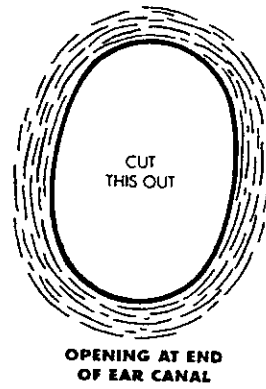
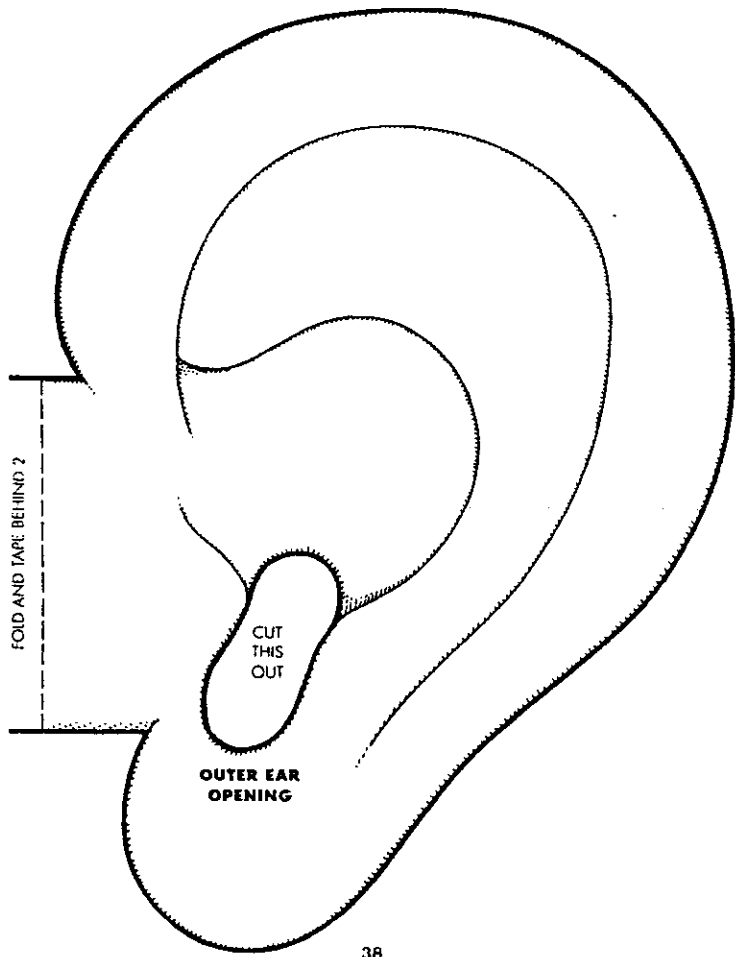
TAPE 4

IRIS/PUPIL

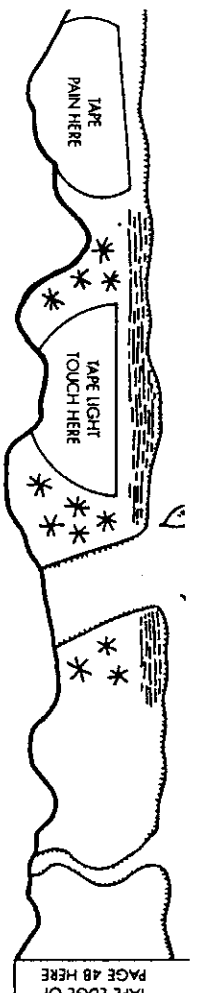
CUT
THIS OUT

COLOR IRIS
BY ANY COLOR.

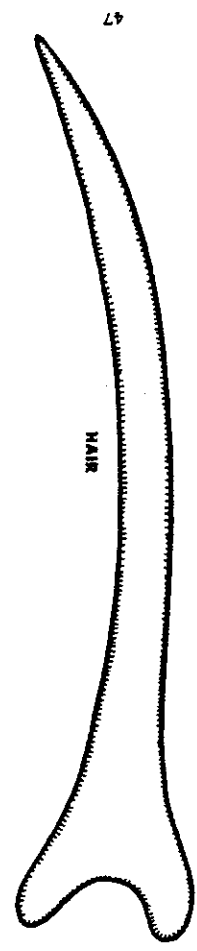
CUT OUT CENTER CIRCLE. CUT ALONG SOLID LINES



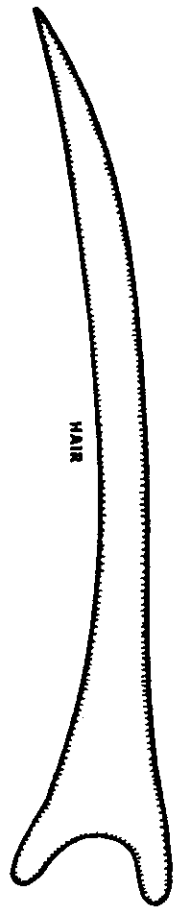
EAR
H35



TAPE CURE OF
PAGE 48 HERE



47

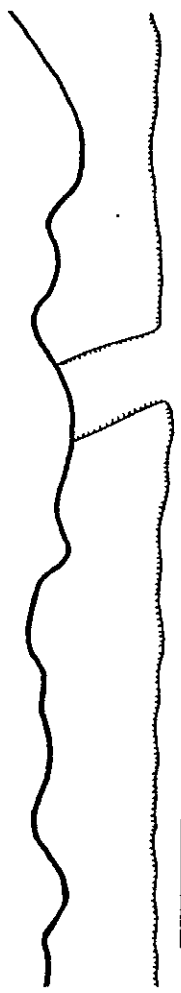


TAPE

TAPE

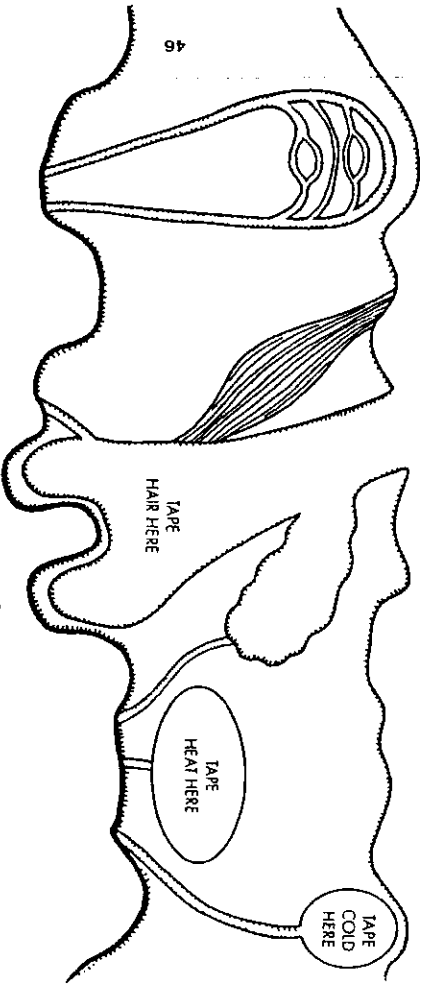
TAPE

TAPE



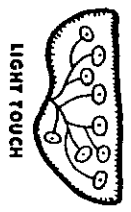
EPIDERMIS

48



DERMIS

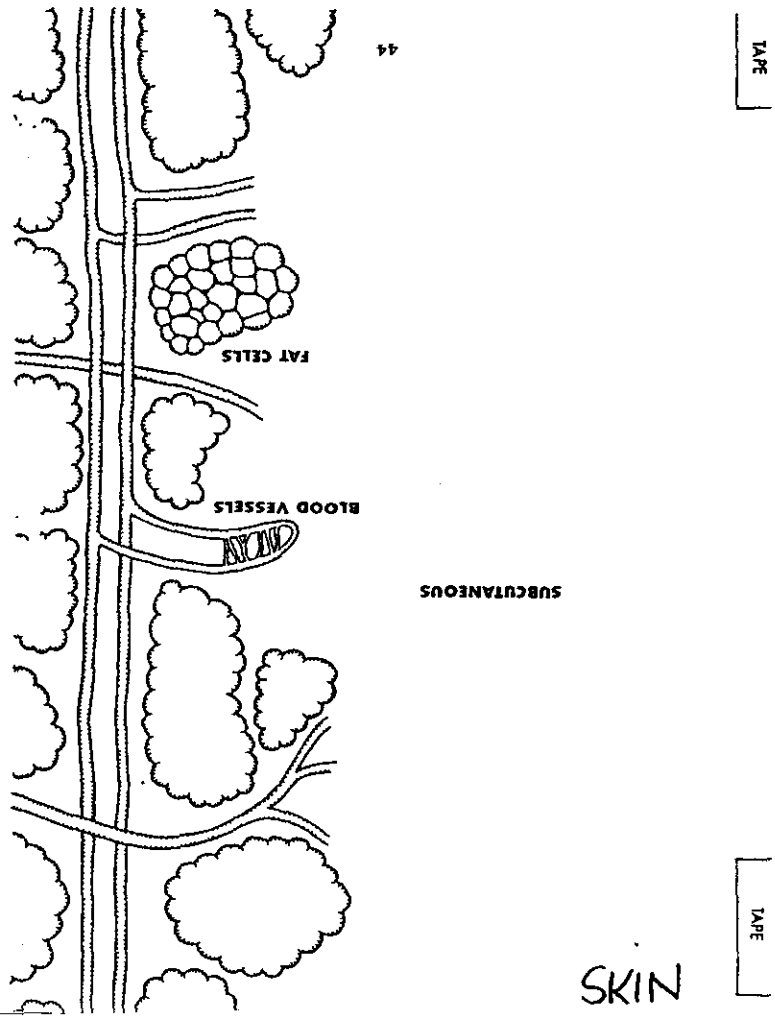
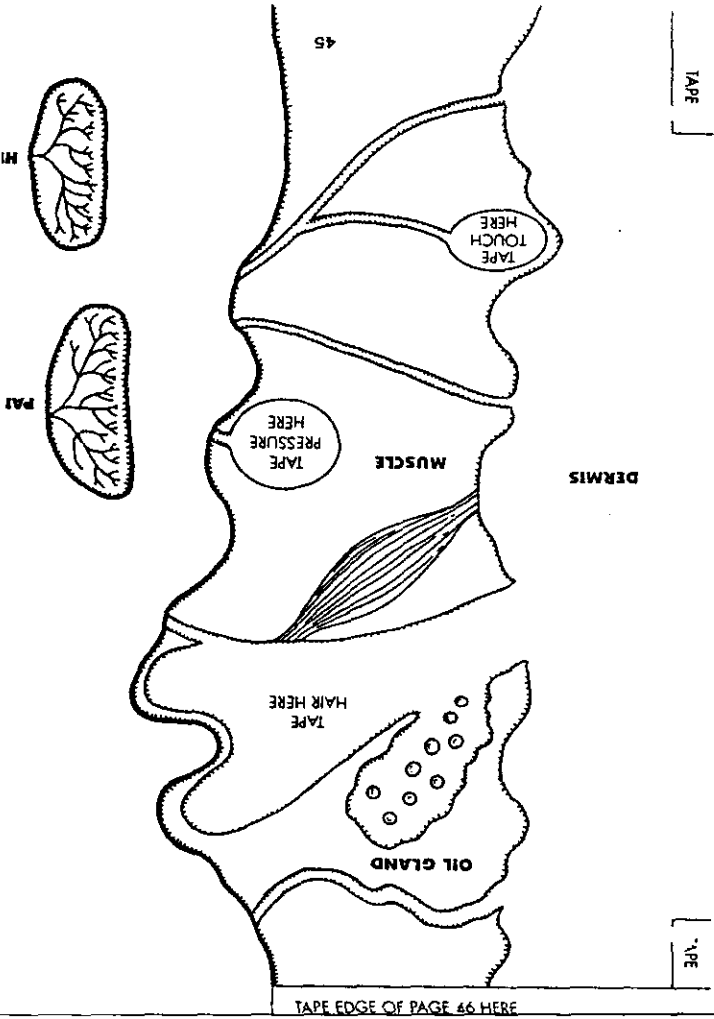
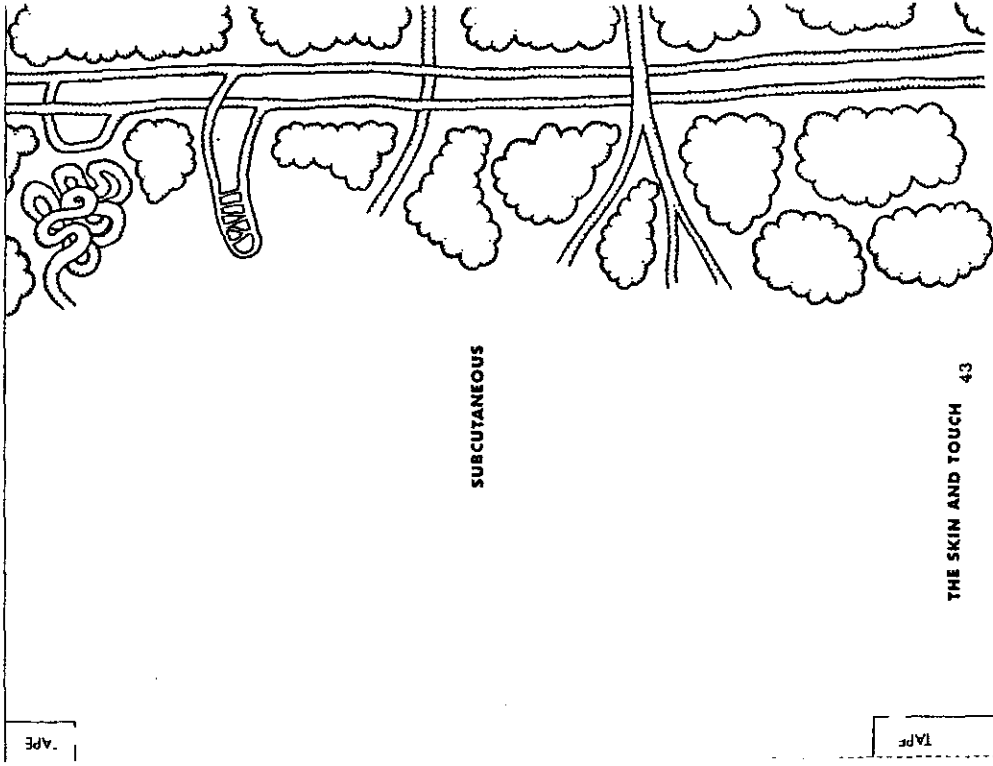
46

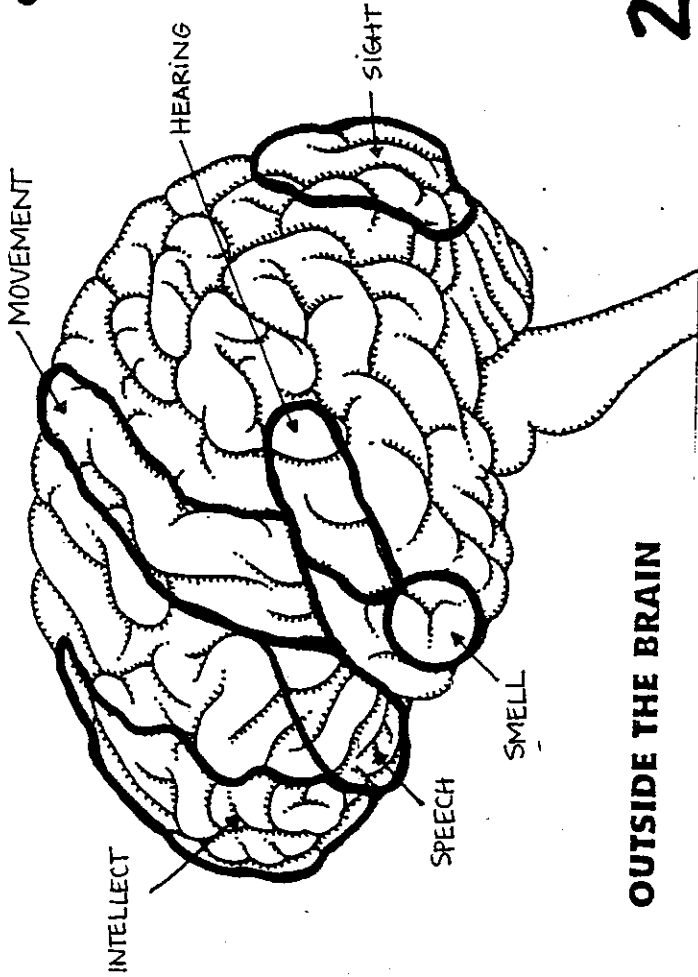


PRESSURE

LIGHT TOUCH

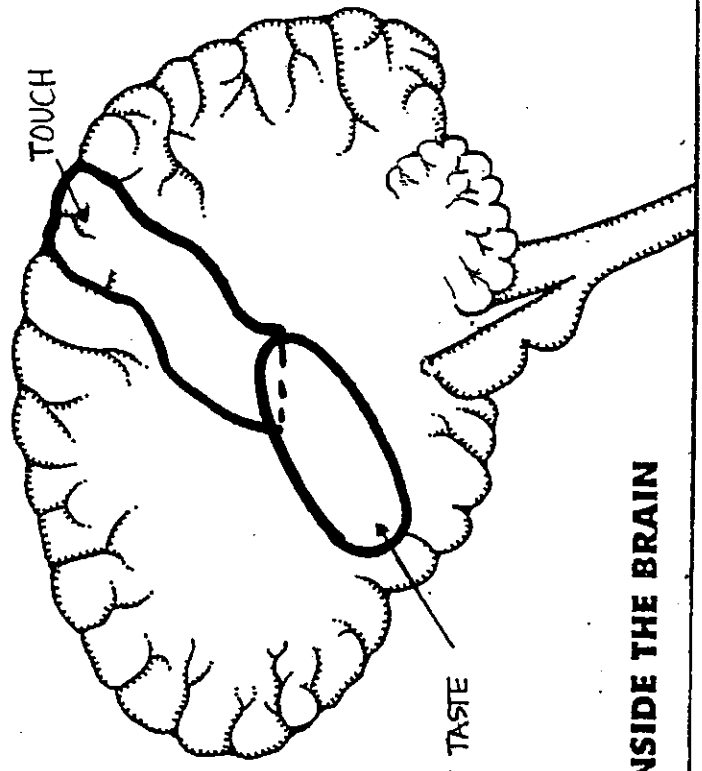
SKIN
HAIR





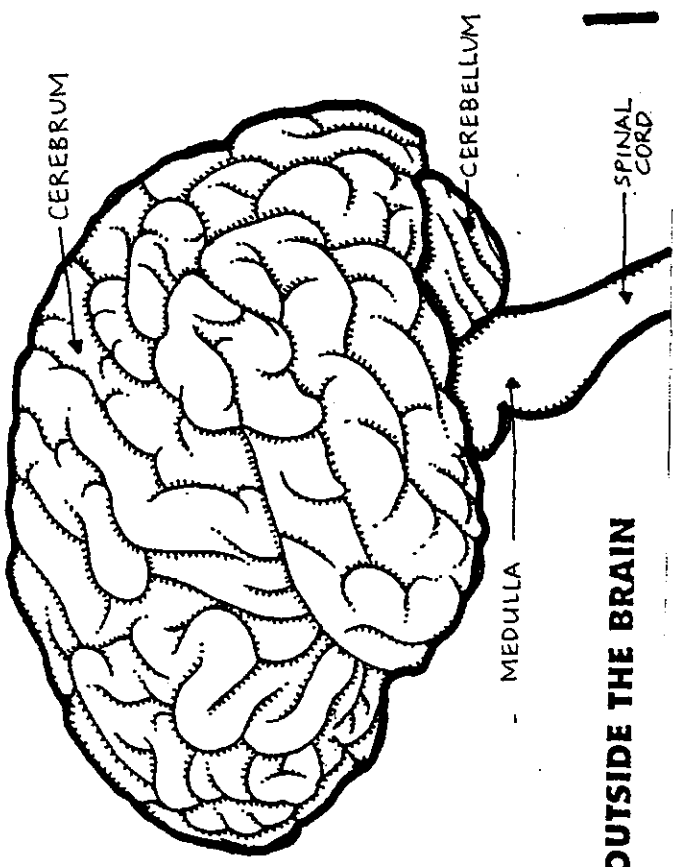
OUTSIDE THE BRAIN

2



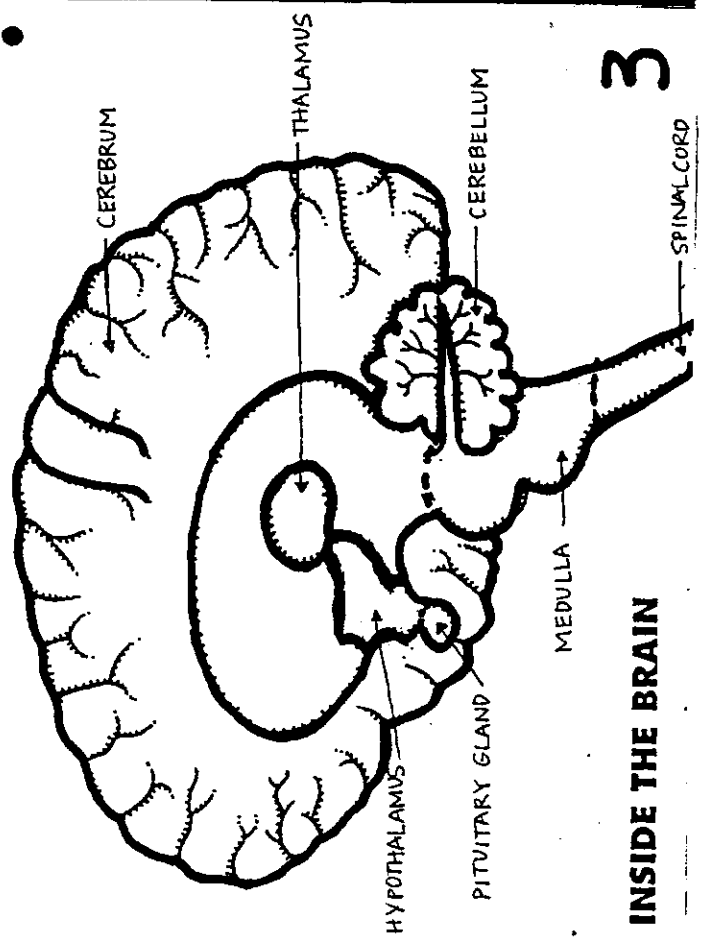
INSIDE THE BRAIN

4



OUTSIDE THE BRAIN

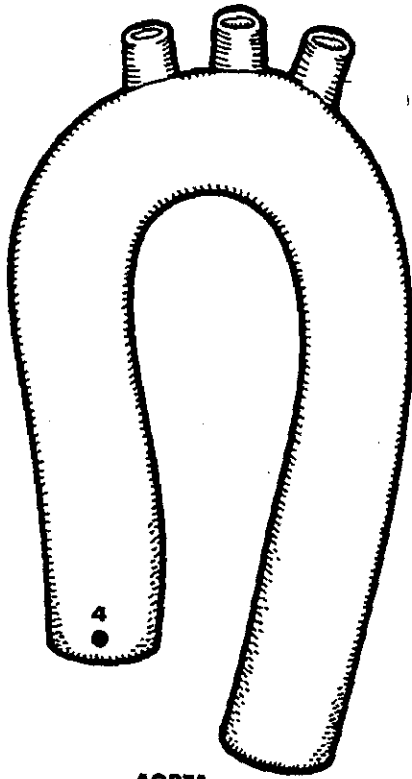
1



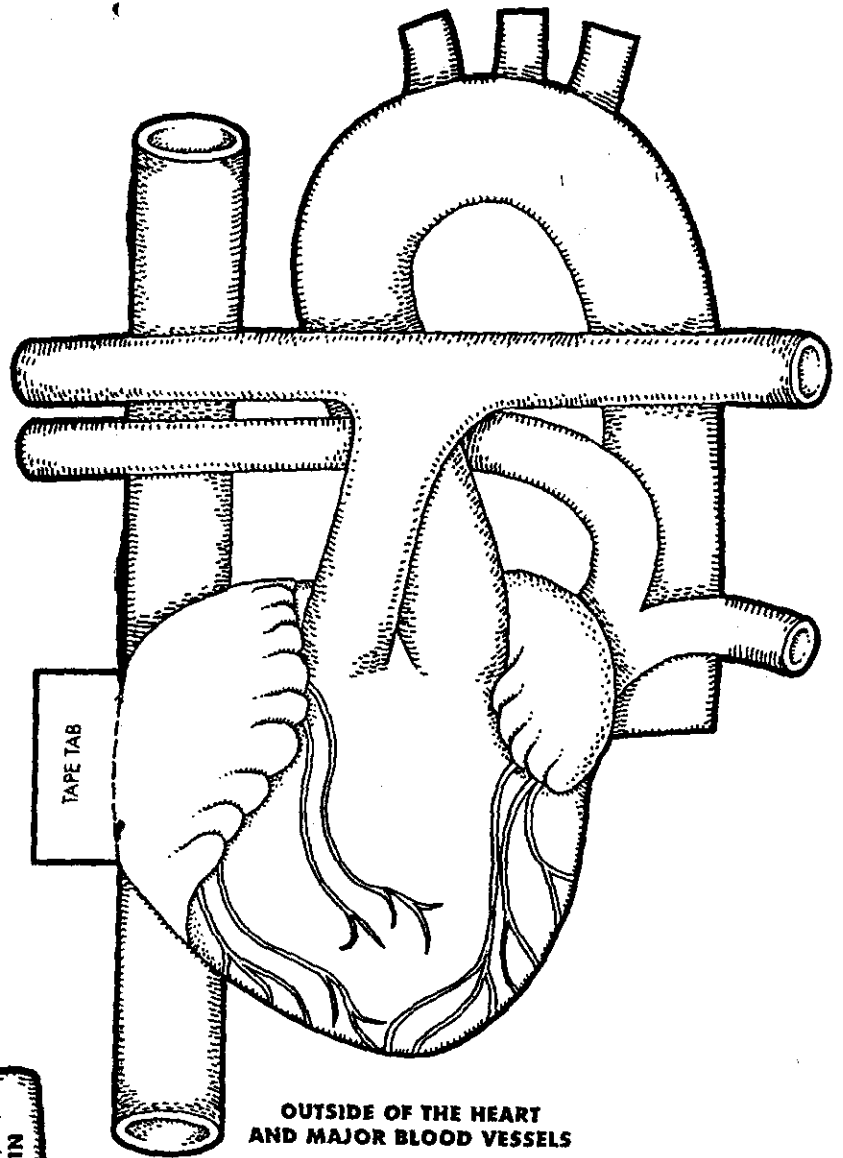
INSIDE THE BRAIN

3

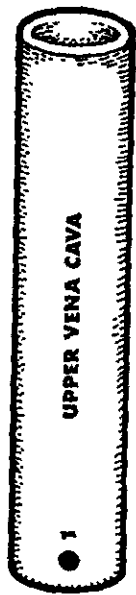
BRAIN



AORTA

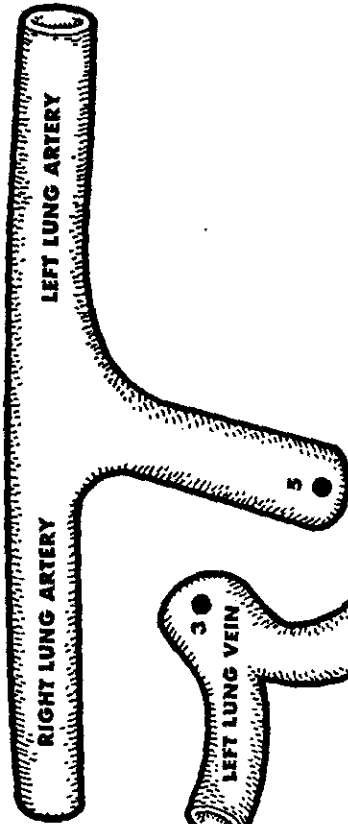


OUTSIDE OF THE HEART
AND MAJOR BLOOD VESSELS



UPPER VENA CAVA

1



LEFT LUNG ARTERY

RIGHT LUNG ARTERY

LEFT LUNG VEIN

RIGHT LUNG VEIN

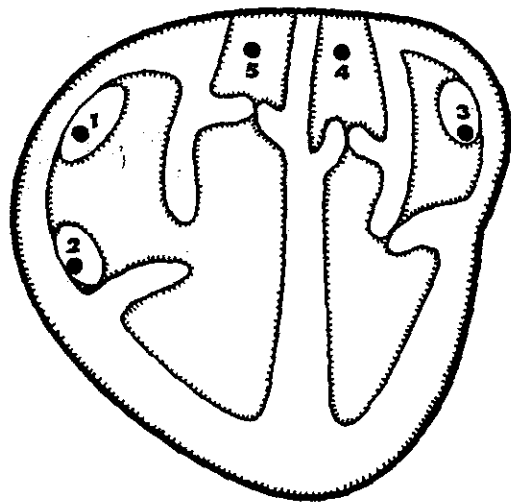
2

3



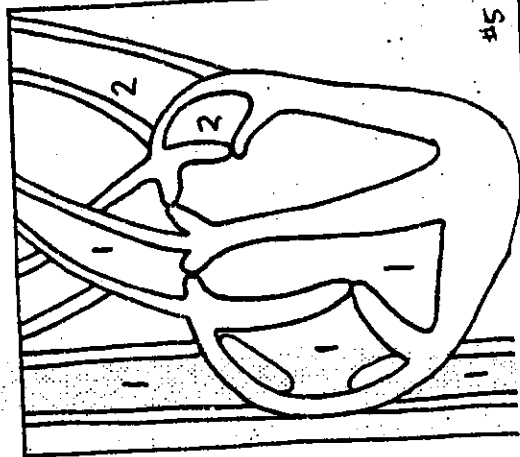
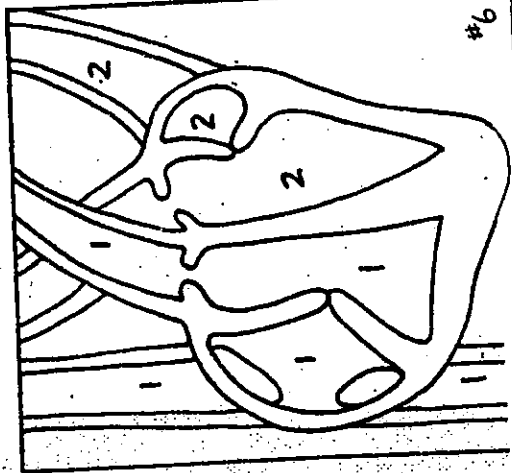
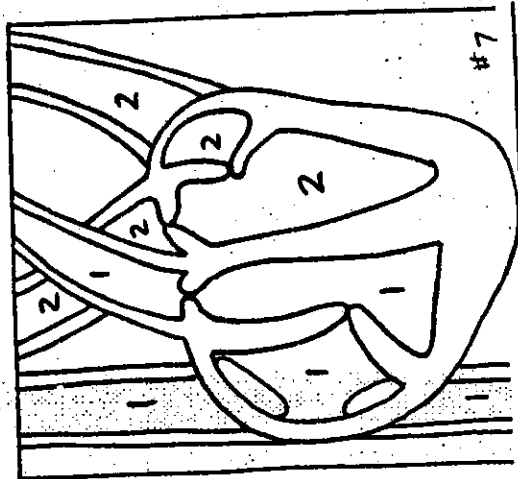
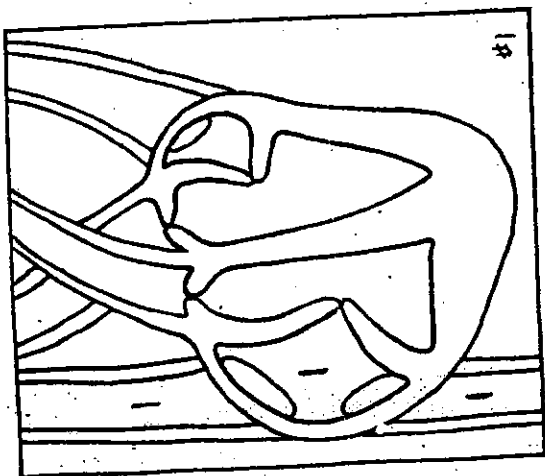
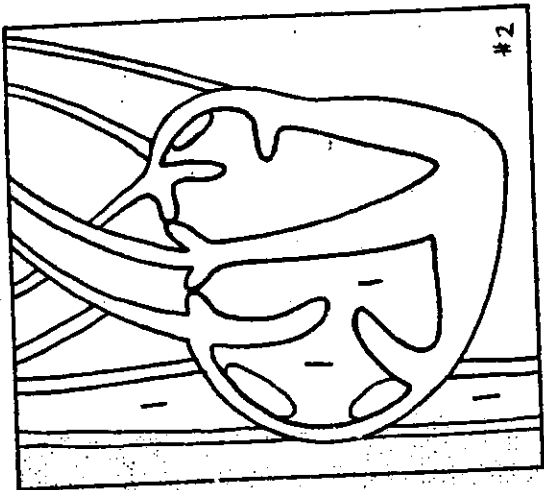
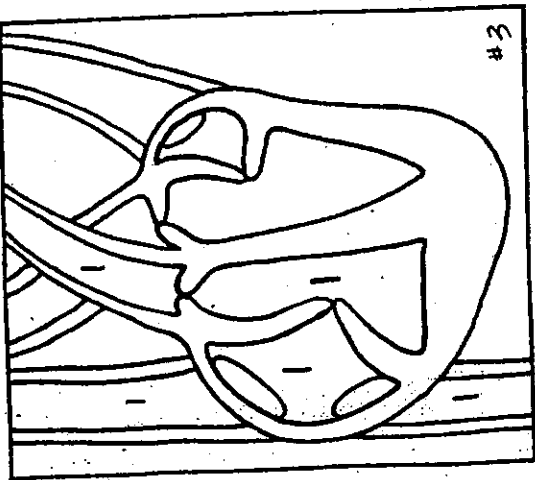
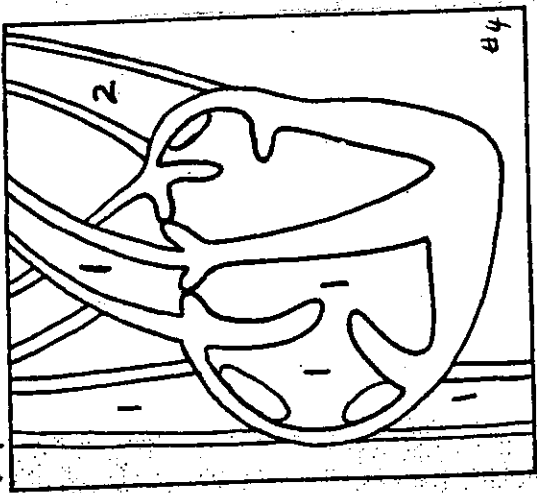
LOWER VENA CAVA

2



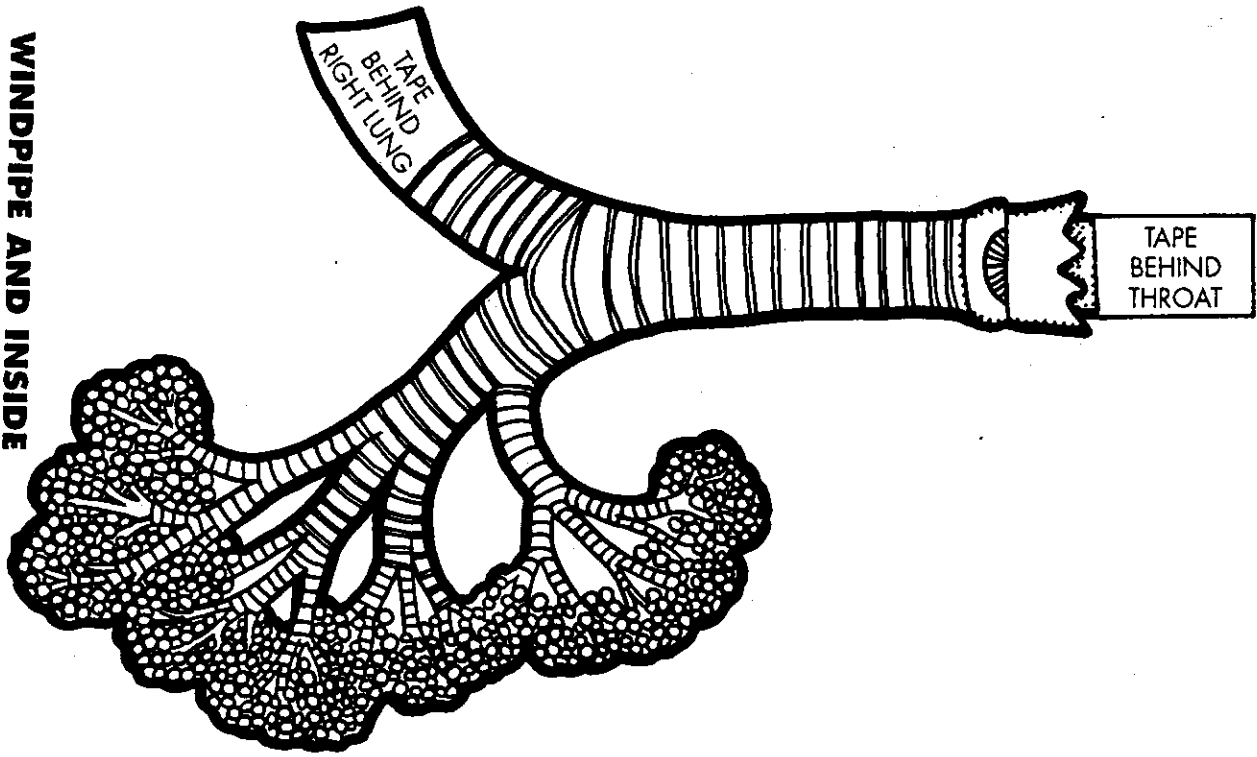
INSIDE OF THE HEART

HEART

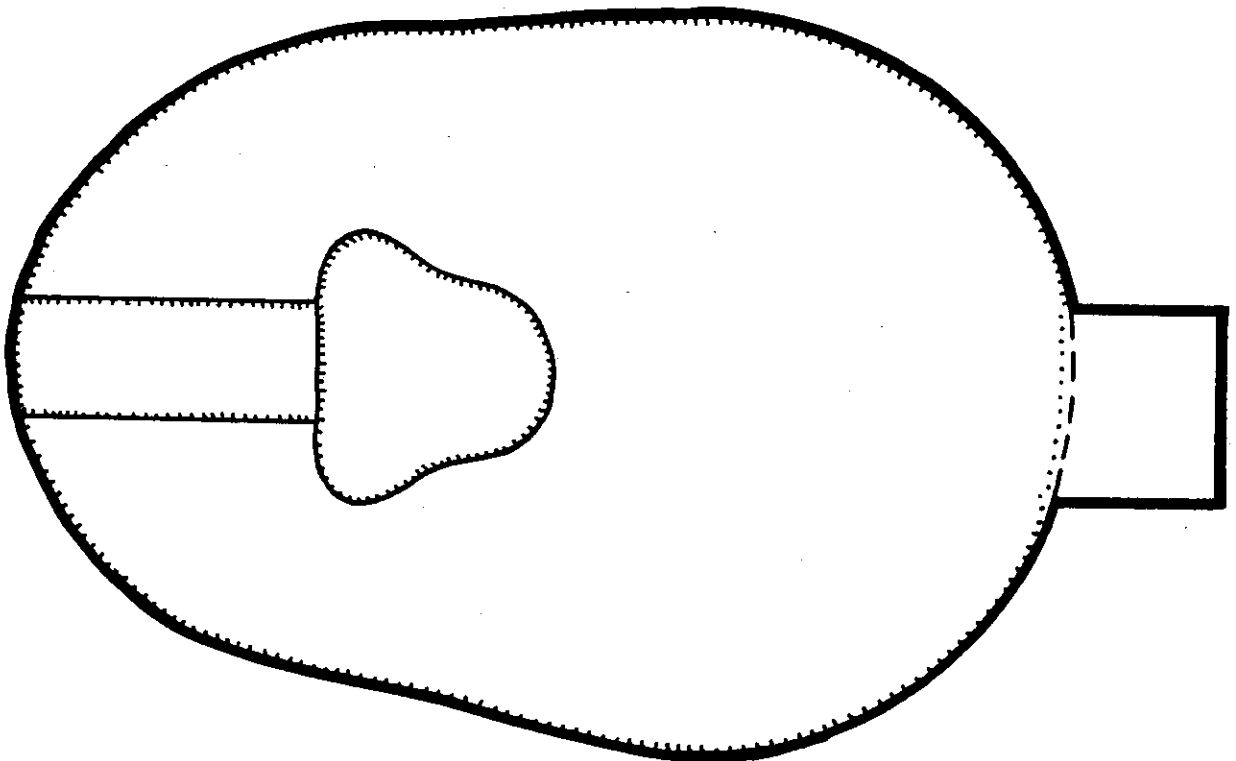


HEART

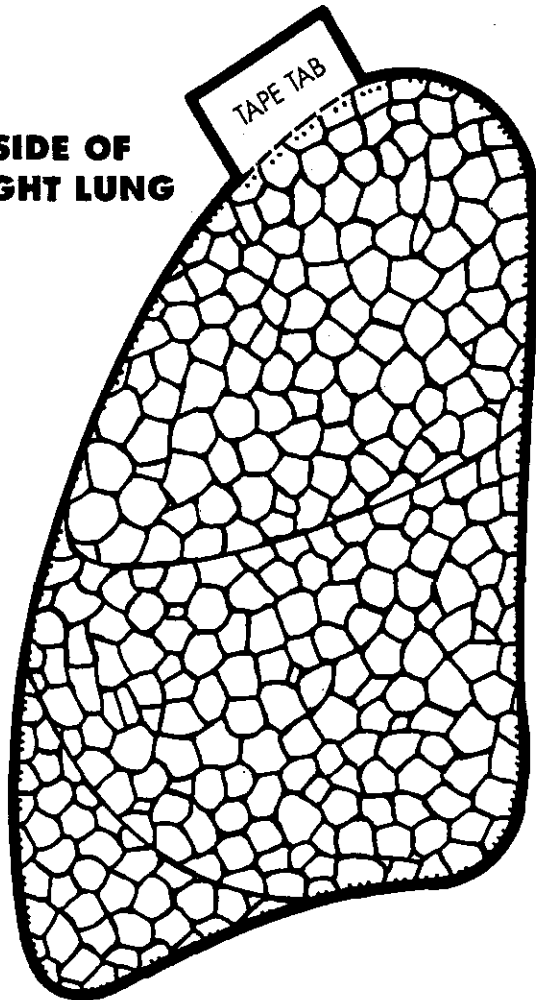
**WINDPIPE AND INSIDE
THE LEFT LUNG**



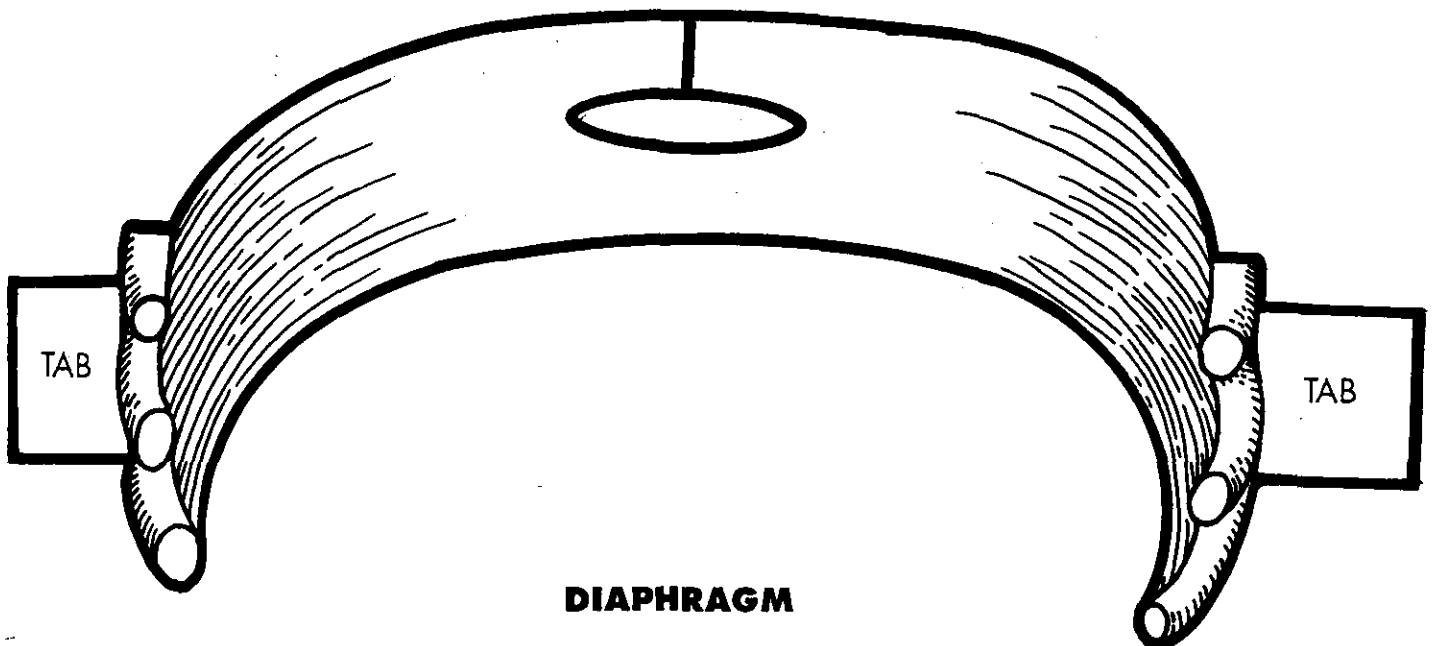
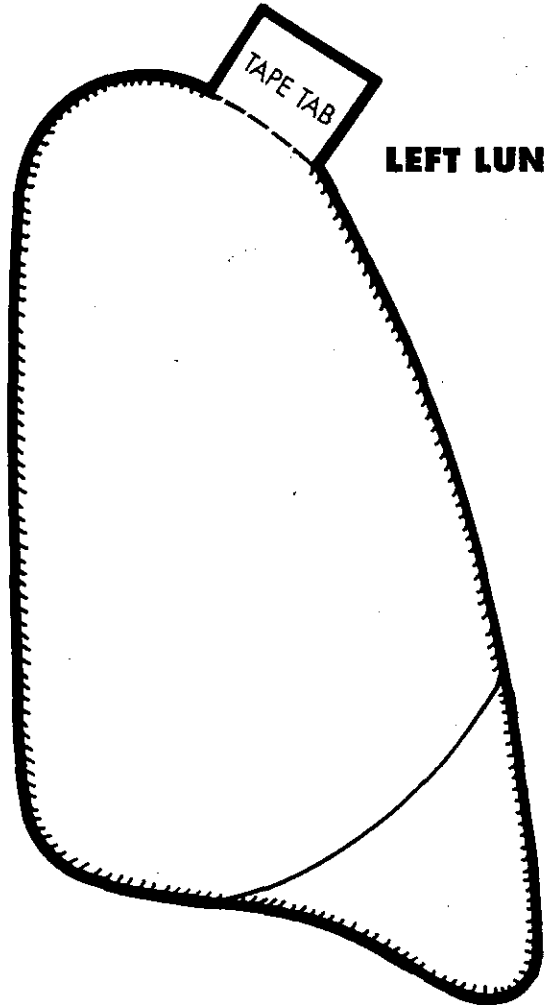
INSIDE THE FACE



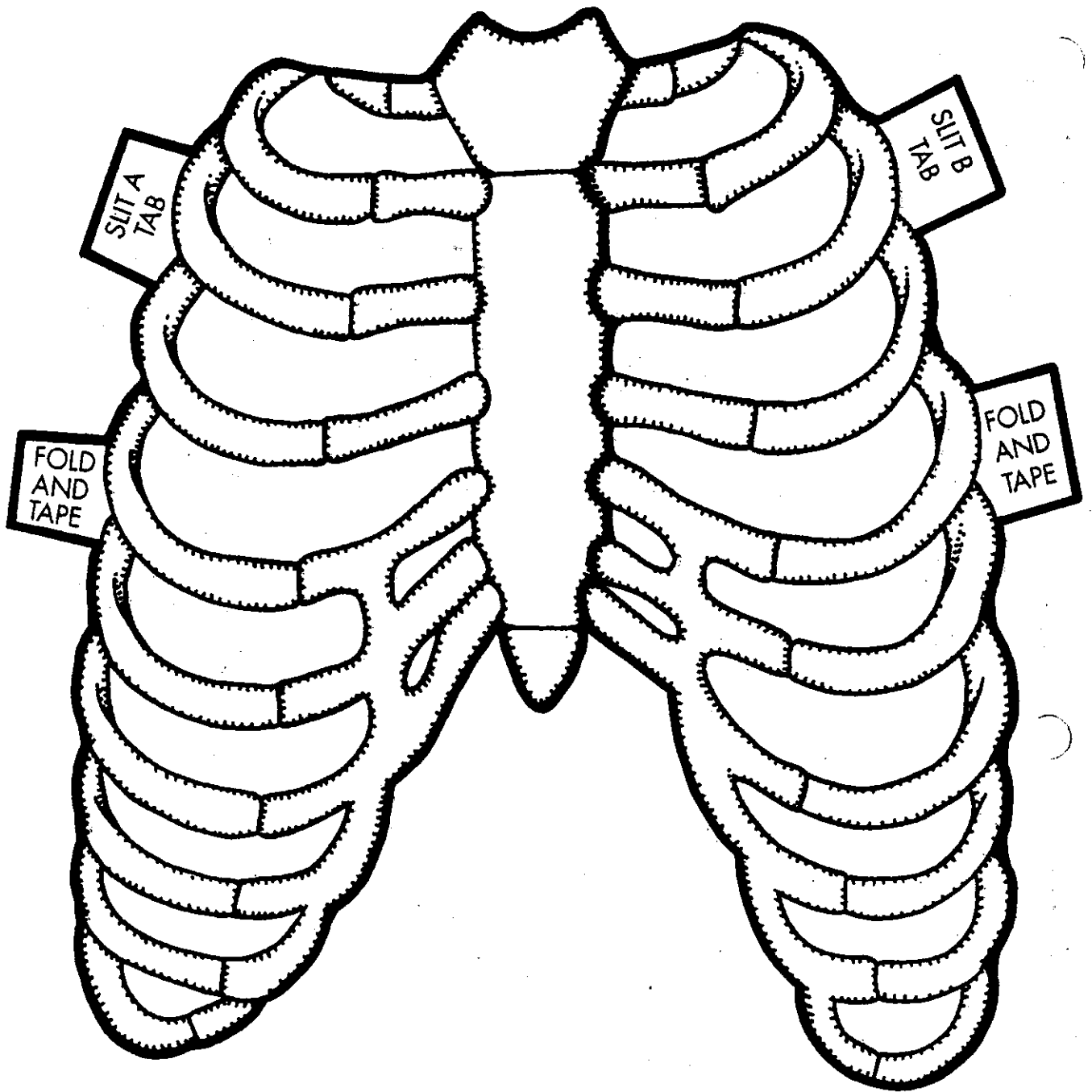
**OUTSIDE OF
THE RIGHT LUNG**



LEFT LUNG



DIAPHRAGM



RIB CAGE

TAPE NECK BONE

HERE

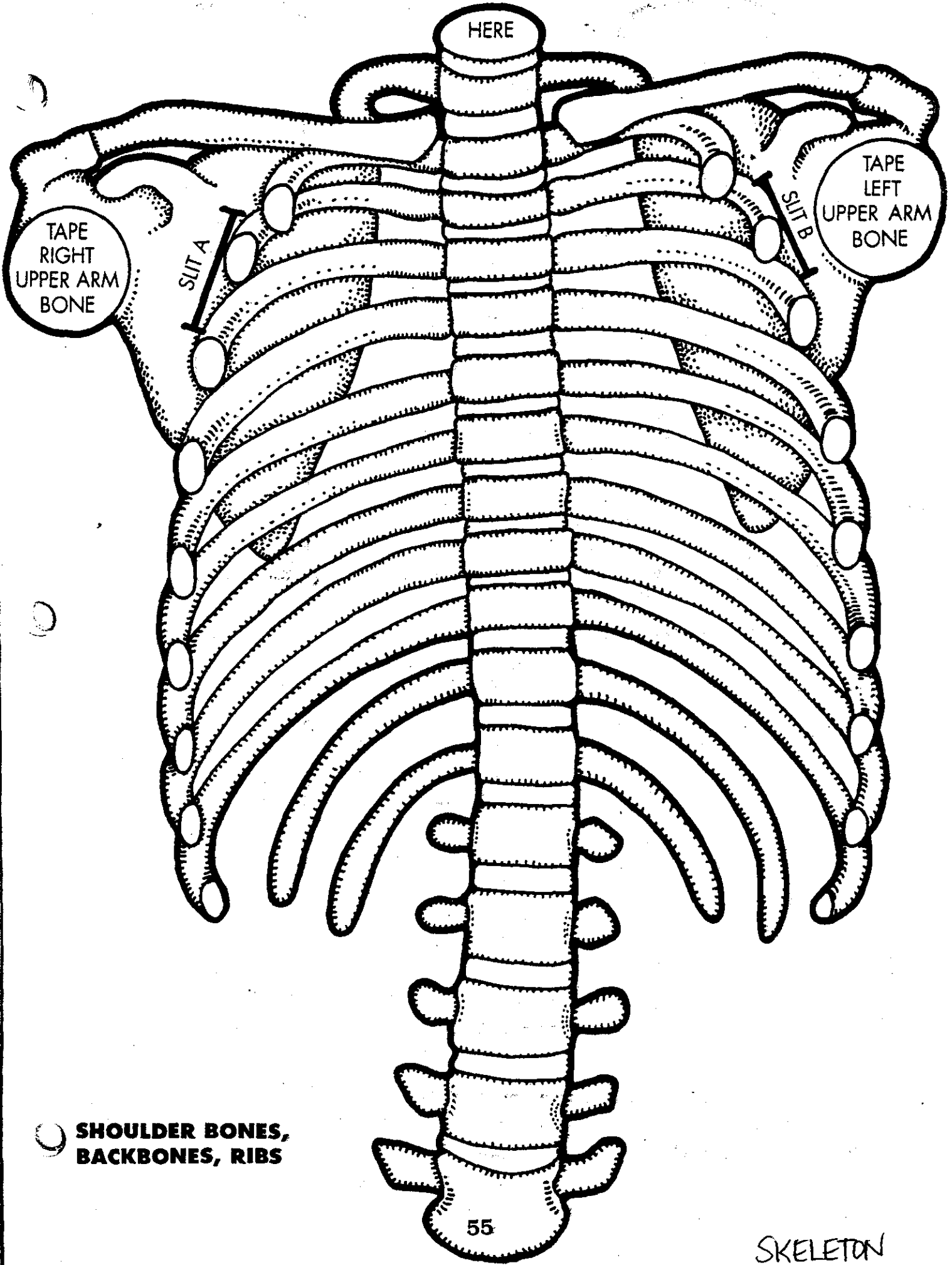
TAPE LEFT UPPER ARM BONE

TAPE RIGHT UPPER ARM BONE

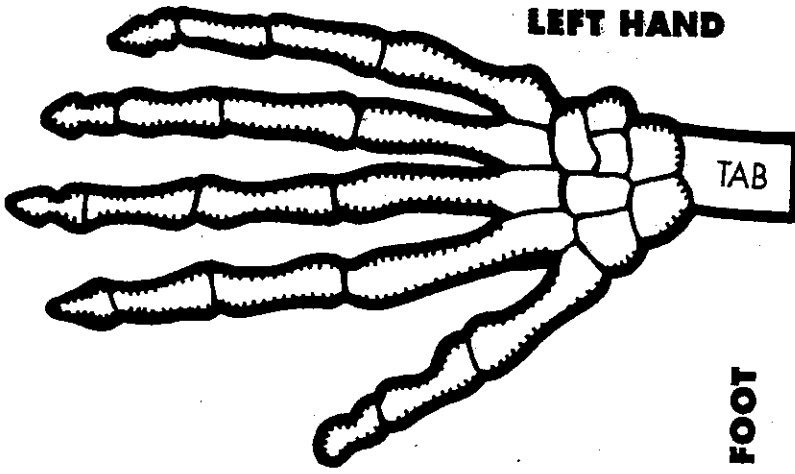
SLIT A

SLIT B

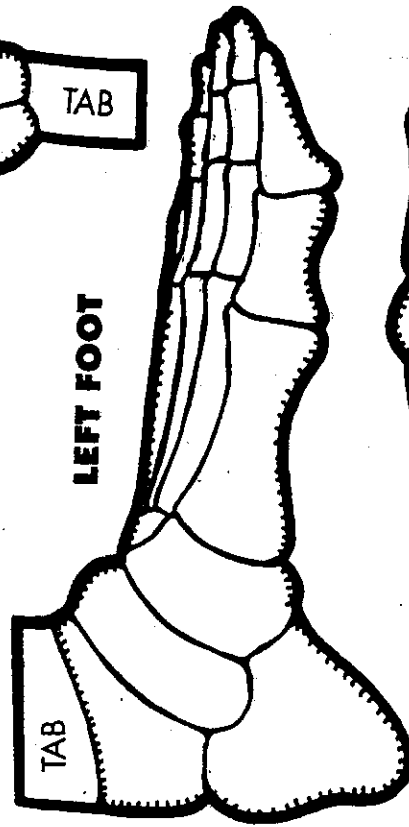
SHOULDER BONES,
BACKBONES, RIBS



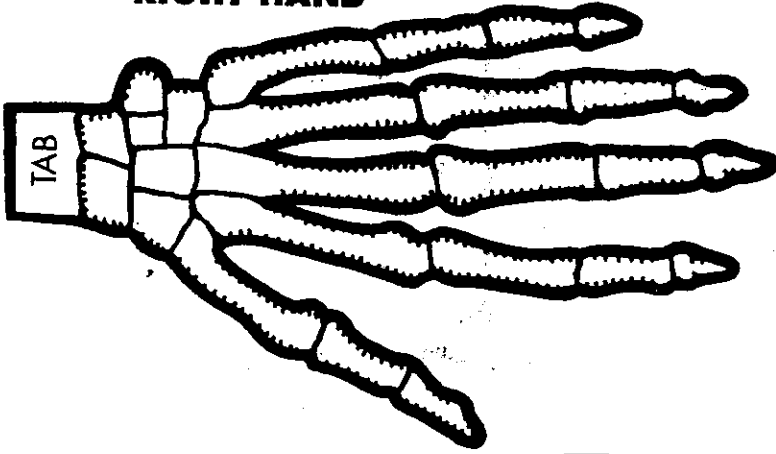
LEFT HAND



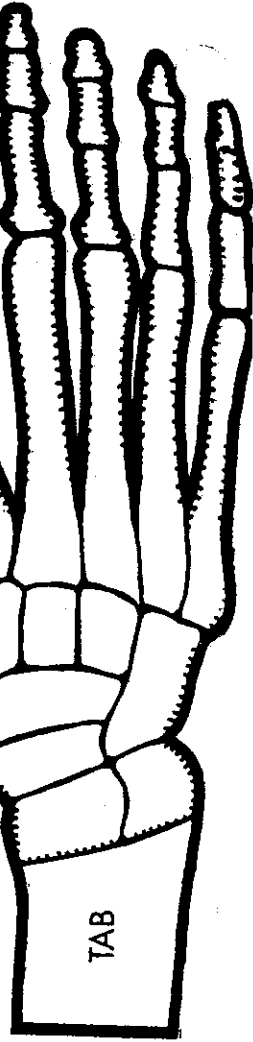
LEFT FOOT



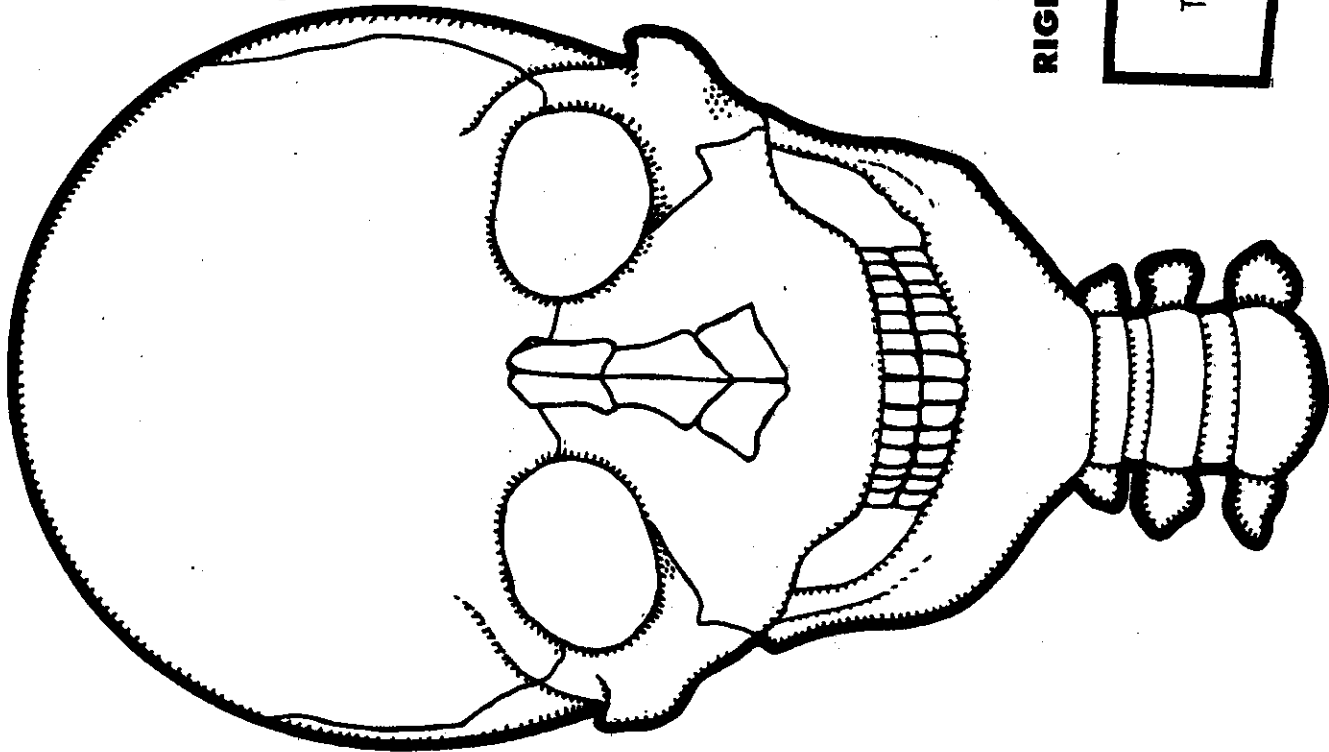
RIGHT HAND

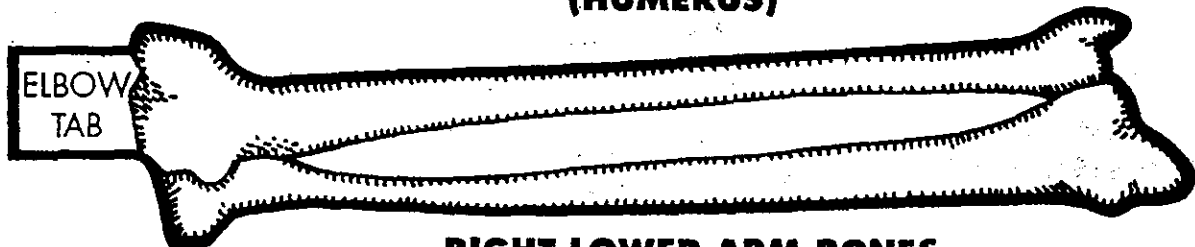
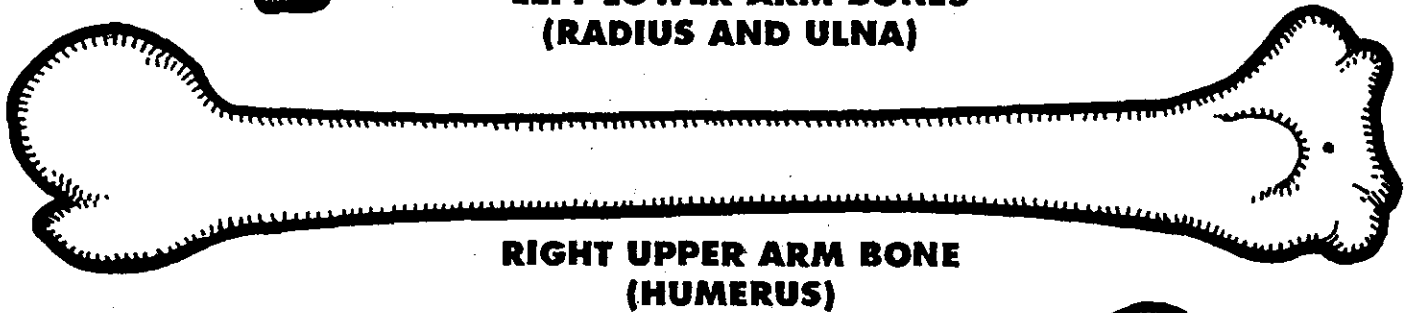
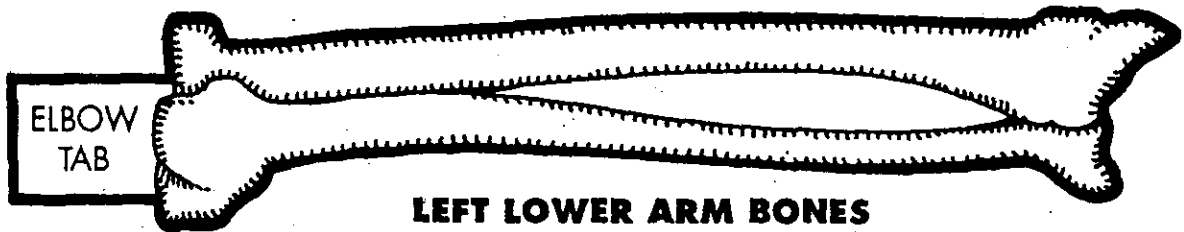
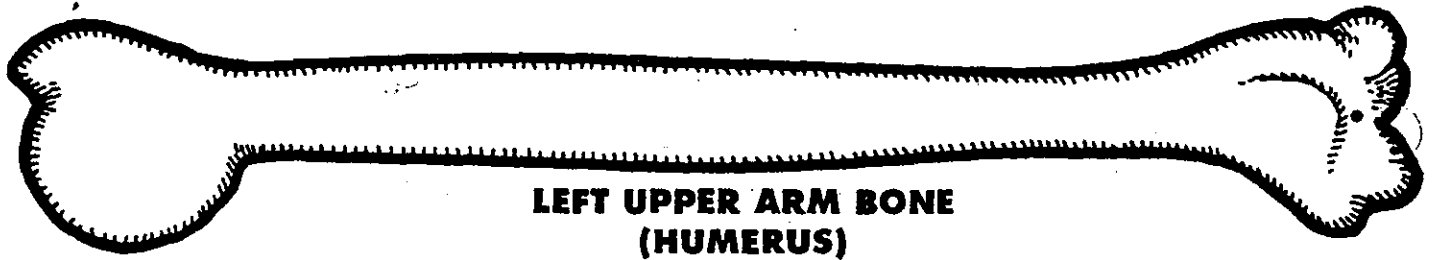
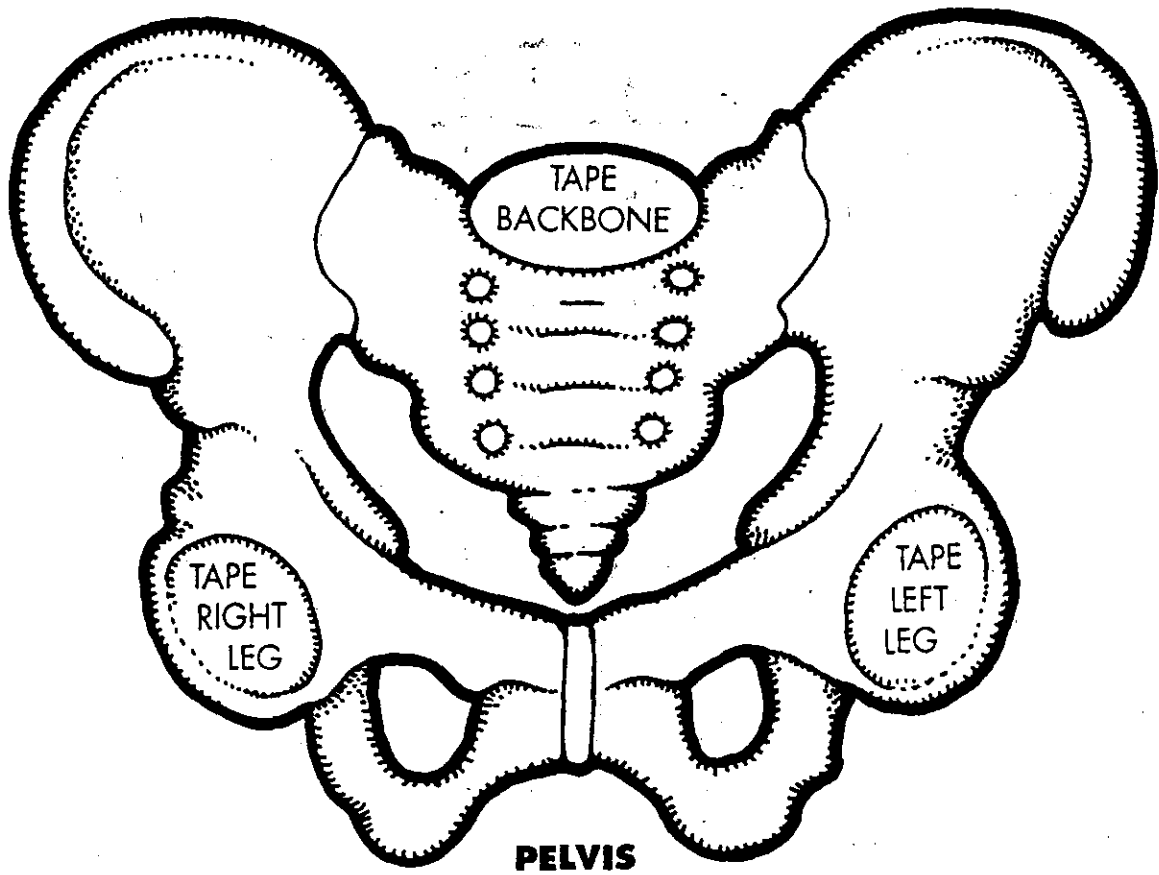


RIGHT FOOT

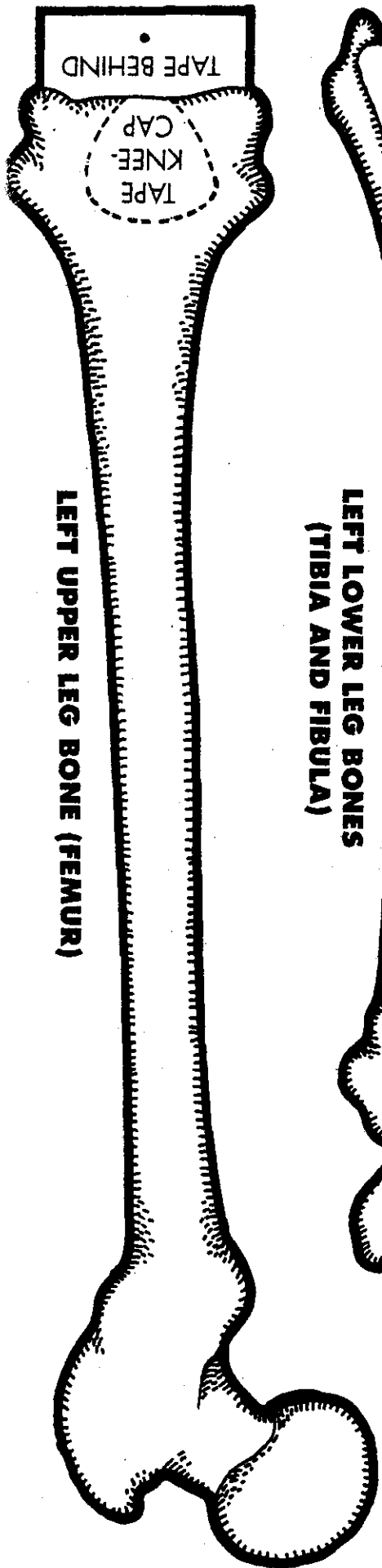


SKULL AND NECK BONES

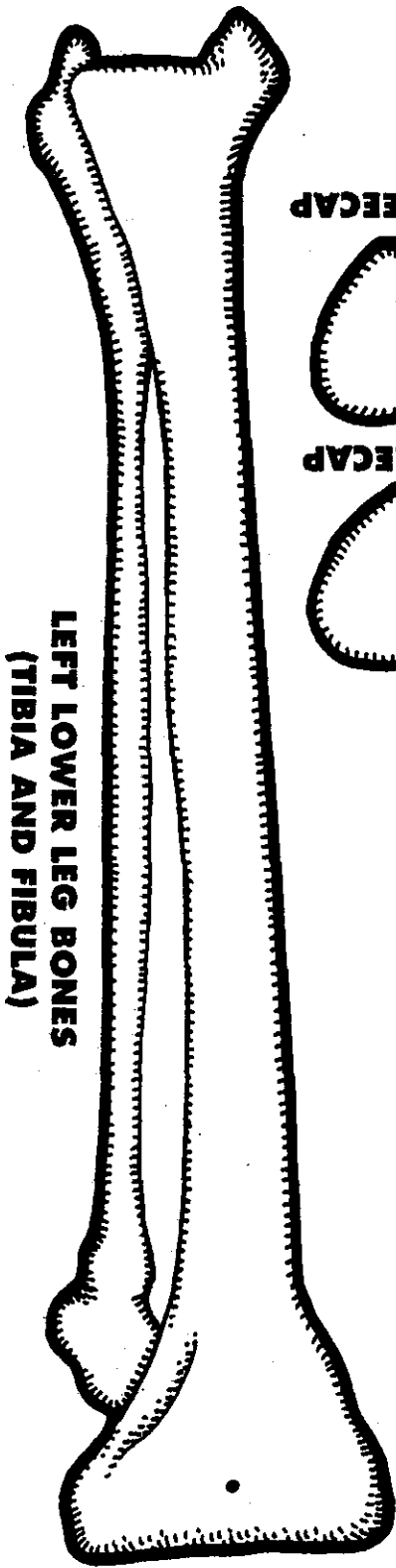




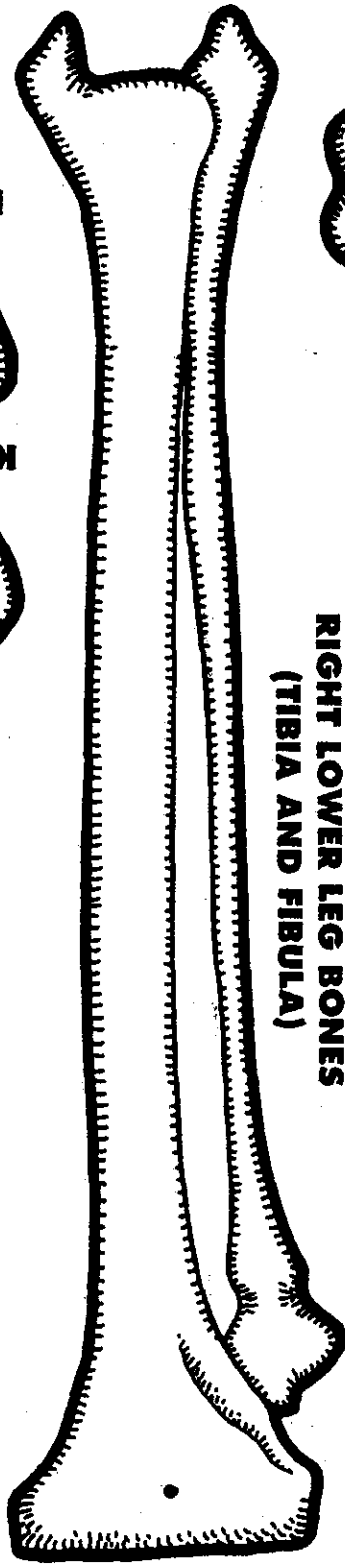
SKELETON



LEFT UPPER LEG BONE (FEMUR)



**LEFT LOWER LEG BONES
(TIBIA AND FIBULA)**

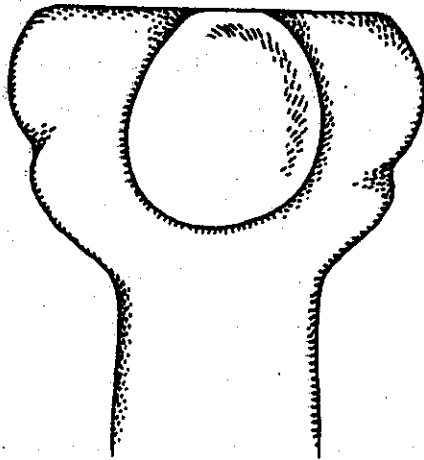


**RIGHT LOWER LEG BONES
(TIBIA AND FIBULA)**

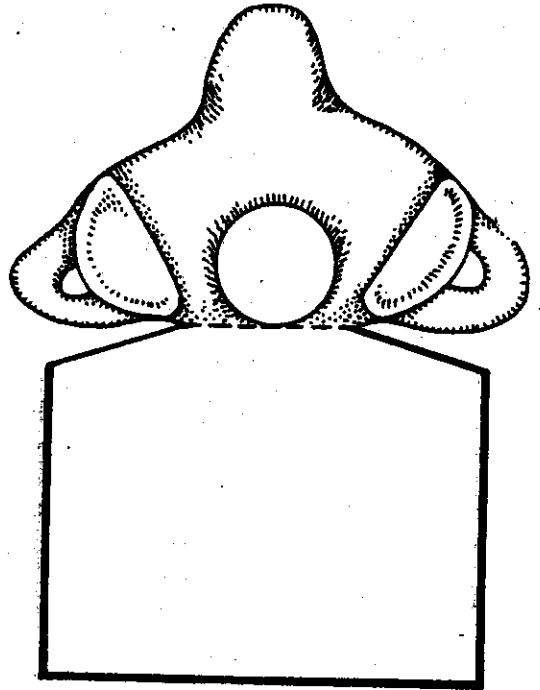


RIGHT UPPER LEG BONE (FEMUR)

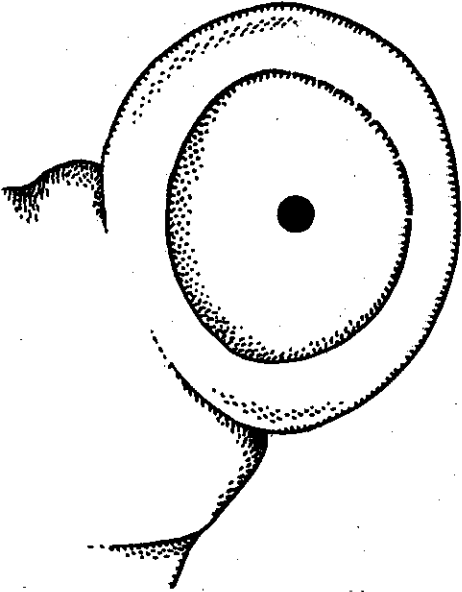
HINGE JOINT



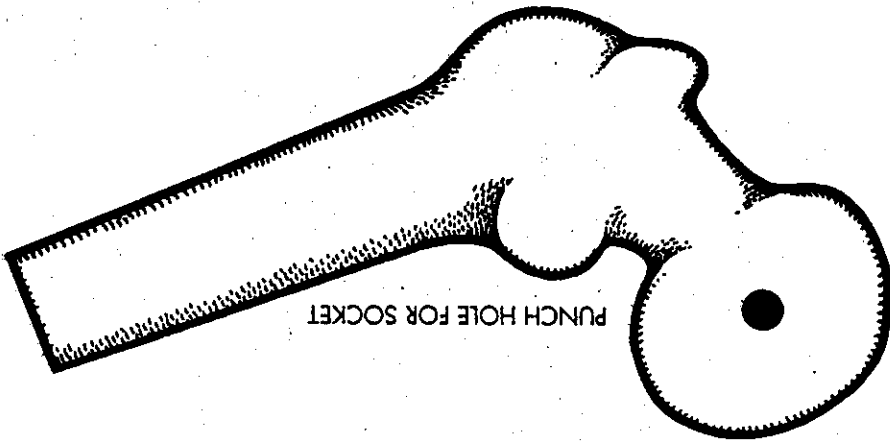
PIVOT JOINT



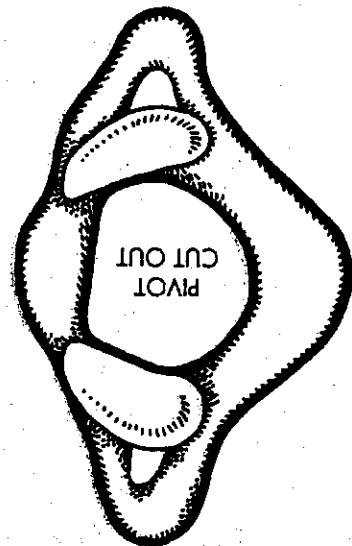
BALL AND
SOCKET JOINT



PUNCH HOLE FOR SOCKET



PIVOT
CUT OUT



HINGE TAB

